

# Miramar, CA

## Kitchen Beach House Project

Clients: Jordan Kai and Jalen Hill

### Design Statement



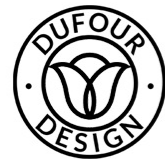
From a kitchen that received low (paw) marks to wagging tails and happy barks, this space was transformed from awkward and outdated to bright, functional, and inviting. The original layout suffered from poor flow, limited storage, and a disconnected island. It wasn't suited for entertaining or two cooks, and despite the home's generous 400 sq. ft. footprint and ocean-facing orientation, it lacked views.

The redesign focused on creating a spacious, social kitchen with a better work triangle, ample storage, and a large island. A panoramic window and NanaWall now showcase the ocean, while the new dining area and expanded patio, with seating for 25, extend the living space outdoors. The clients sought budget-friendly solutions with a touch of flair: stock cabinets with upgraded faces, larger appliances, a custom hood, and thoughtful details in lighting, finishes, and materials. The patio completes the vision with fire tables and a relaxed indoor-outdoor flow, delivering the beachy oasis the homeowners dreamed of.

1. COVER PAGE
2. MOOD BOARD
3. EXIST. KITCHEN PLAN
4. PROP. KITCHEN PLAN
5. - 6. KITCHEN ELEVATIONS

design by:  
**Adrian Dufour**





**MOOD BOARD SPECIFICATIONS:**

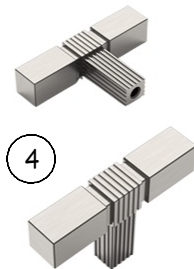
- ① ALTERNATE PENDANT LIGHT
- ② BRYNNE 14" PENDANT LIGHT
- ③ AHRNSOHN KITCHEN FAUCET
- ④ AMERDECO BAR PULLS
- ⑤ CORIAN QUARTZ - LONDON FOG
- ⑥ SEMIHANDMADE SUPERMATTE CABINETS
- ⑦ CORIAN BLUE CARRARA
- ⑧ DAL TILE - GAMMA COLLECTION
- ⑨ CALI FLOORS - NATURAL ELM LVP
- ⑩ CALI FLOORS - WHITE ASPEN LVP

**DESIGN NOTES**

- ORIENTED THE FURNITURE FOR THE VIEW
- SITE LINES FOR THE VIEW
- TWO SINKS; ONE FOR POTS AND PANS
- TWO DISHWASHERS; ONE FOR POTS AND PANS
- LARGE PREP AREAS
- ADDITIONAL STORAGE WITH TALL WALL CABINETS
- ACCESSIBILITY CONSIDERATIONS IN LAYOUT
- DOG STORAGE AND EATING AREA IN PANTRY

**AESTHETICS**

- CLEAN LINES; WARM, BRIGHT, AND INVITING
- CUSTOM RANGE FOCAL POINT
- COASTAL VIBE; BLUES, DRIFTWOOD, AND SAND ACCENTS
- MODERN DINING FIREPLACE OPEN TO LIVING AND KITCHEN
- FIREPLACE TABLES OUTDOORS
- GLASS RAILINGS FOR VIEW
- FOCUSED ON COMFORT, QUALITY, AND DURABLE MATERIALS



NATIONAL KITCHEN+BATH ASSOCIATION



**MOOD BOARD**  
No Scale



**Dufour Design**

1700 El Camino Real S San Francisco, CA. 94080  
415-916-2968 dufour-design.com

© 2023

Marimar, CA

**GOLDEN YEARS**

**MOOD BOARD**

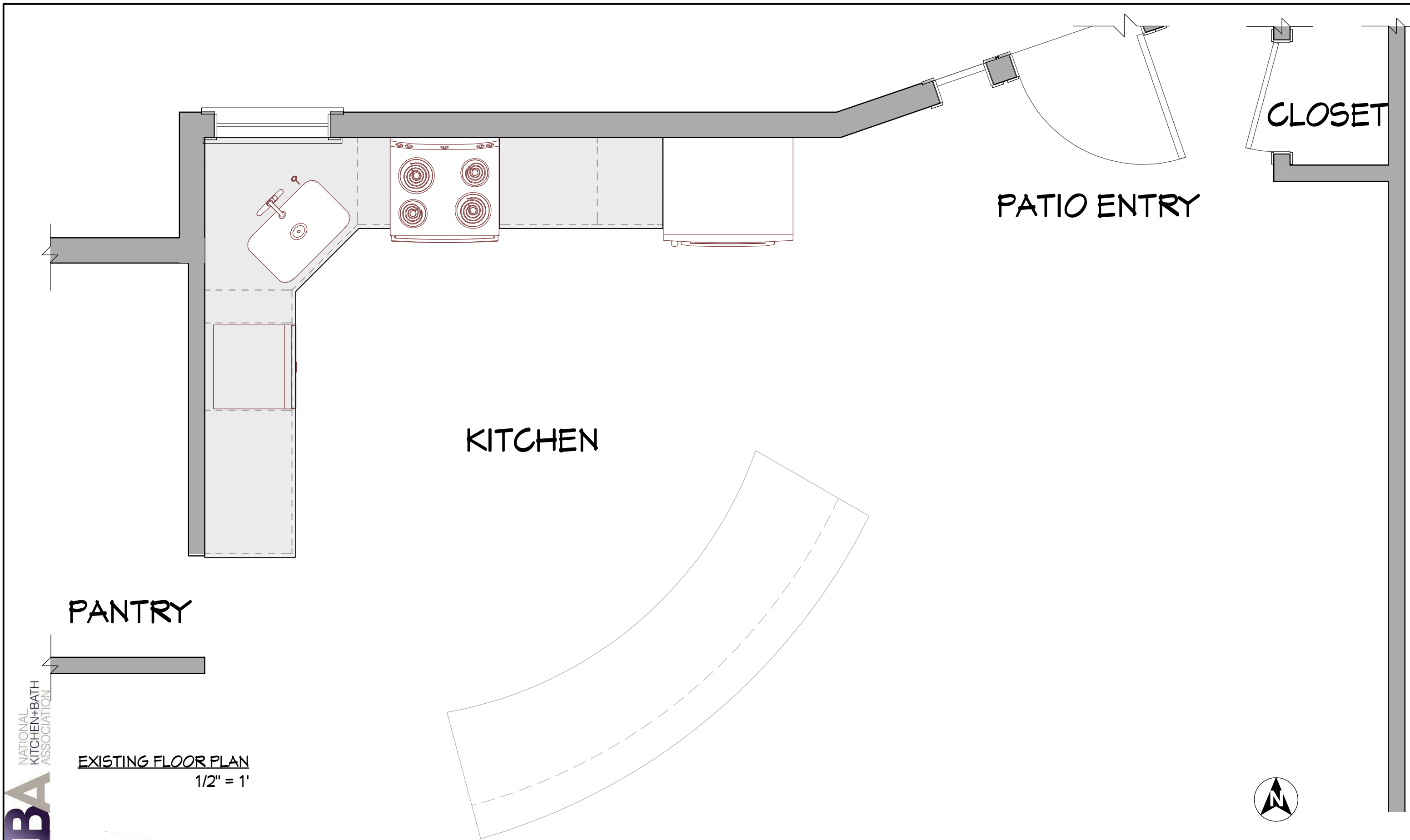
DRAWN BY: Adrian Dufour

DATE: 10/2023

SHEET NUMBER

**2**

REVISION



PATIO ENTRY

CLOSET

KITCHEN

PANTRY

EXISTING FLOOR PLAN  
1/2" = 1'



NBA  
NATIONAL  
KITCHEN+BATH  
ASSOCIATION

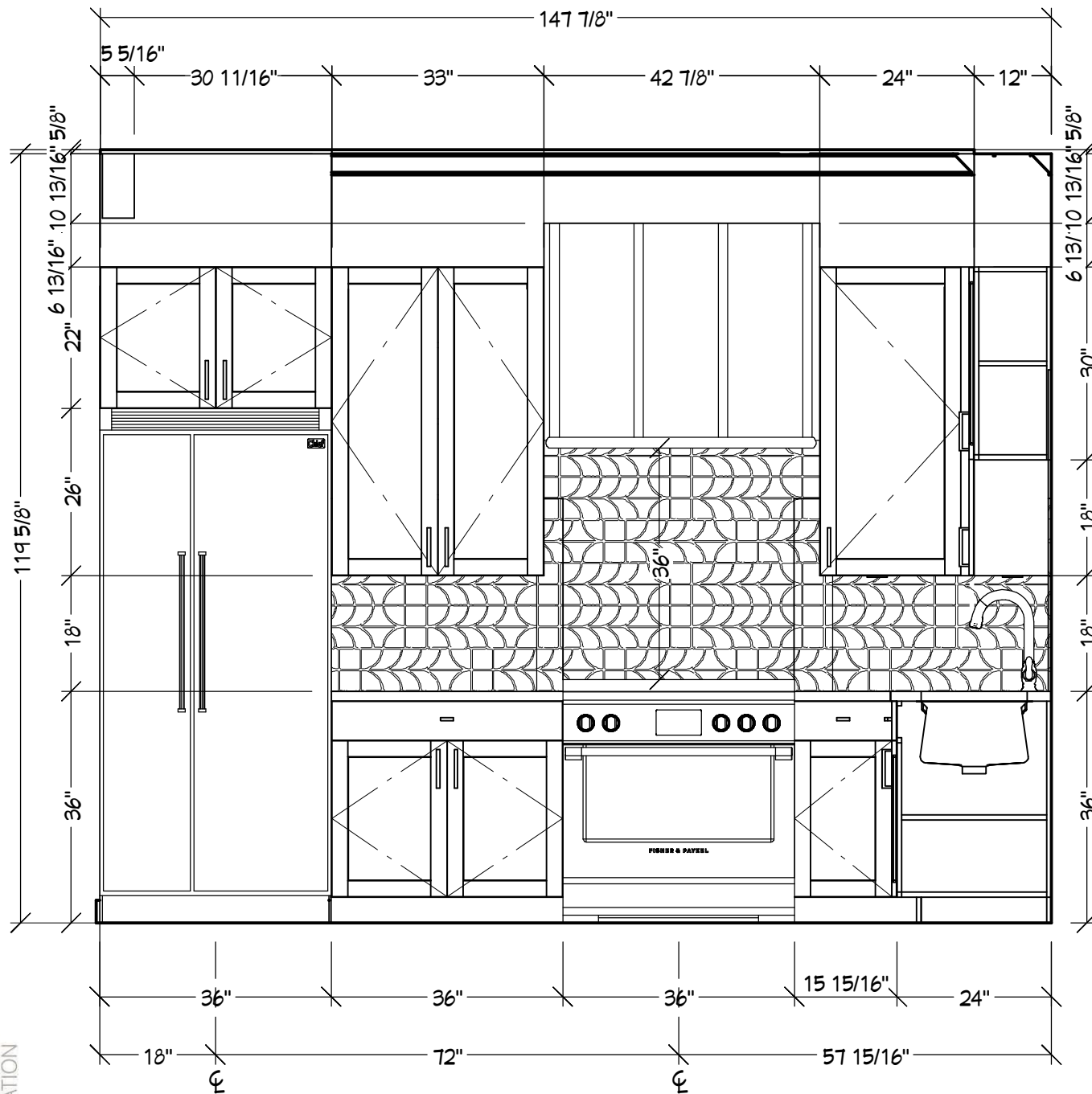

**Dufour Design**  
 1700 El Camino Real S San Francisco, CA. 94080  
 415-916-2968 dufour-design.com

Marimar, CA  
**GOLDEN YEARS**

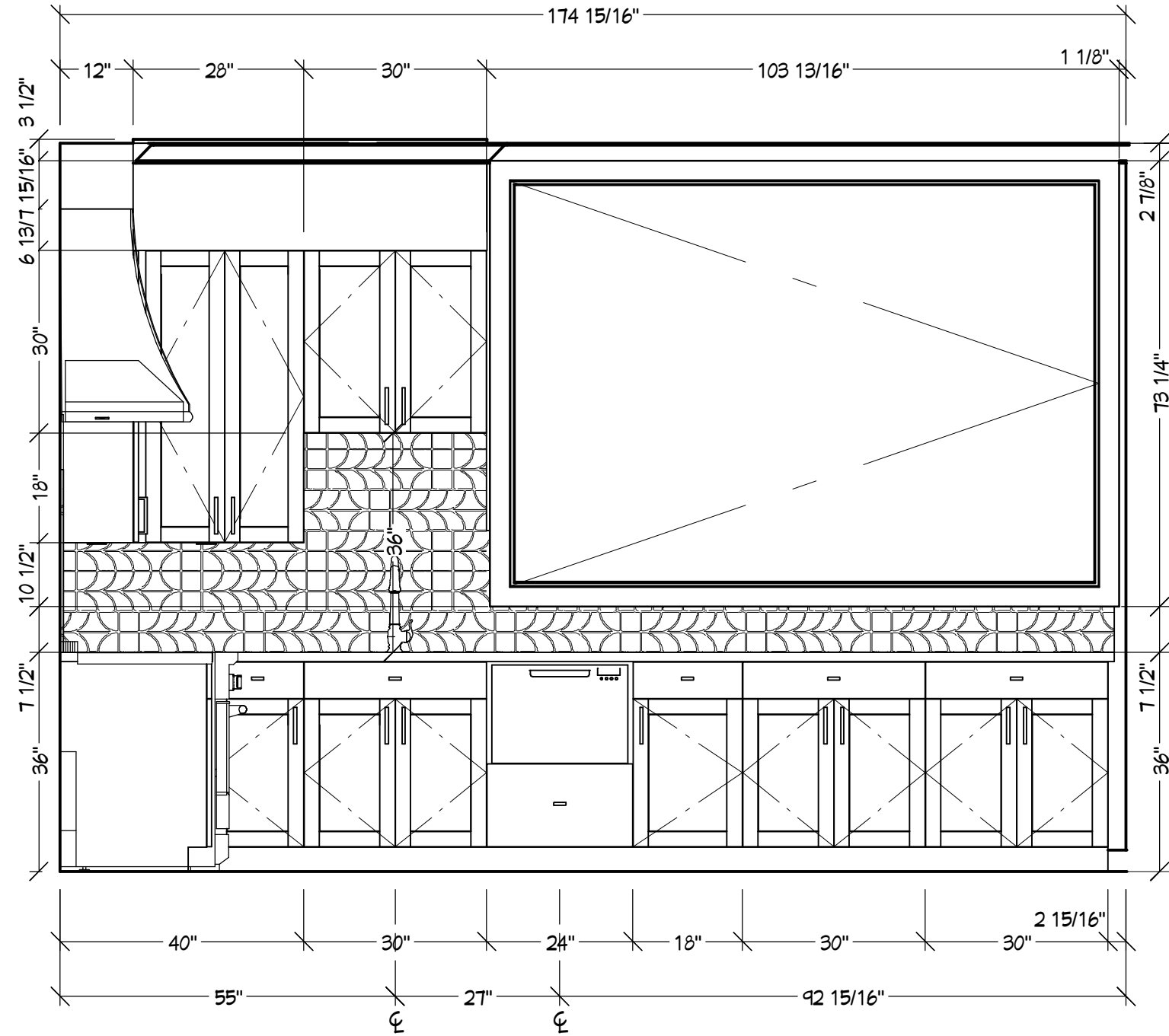
**EXISTING PLAN**  
 DRAWN BY: Adrian Dufour | DATE: 10/2023

SHEET NUMBER  
**3**  
 REVISION

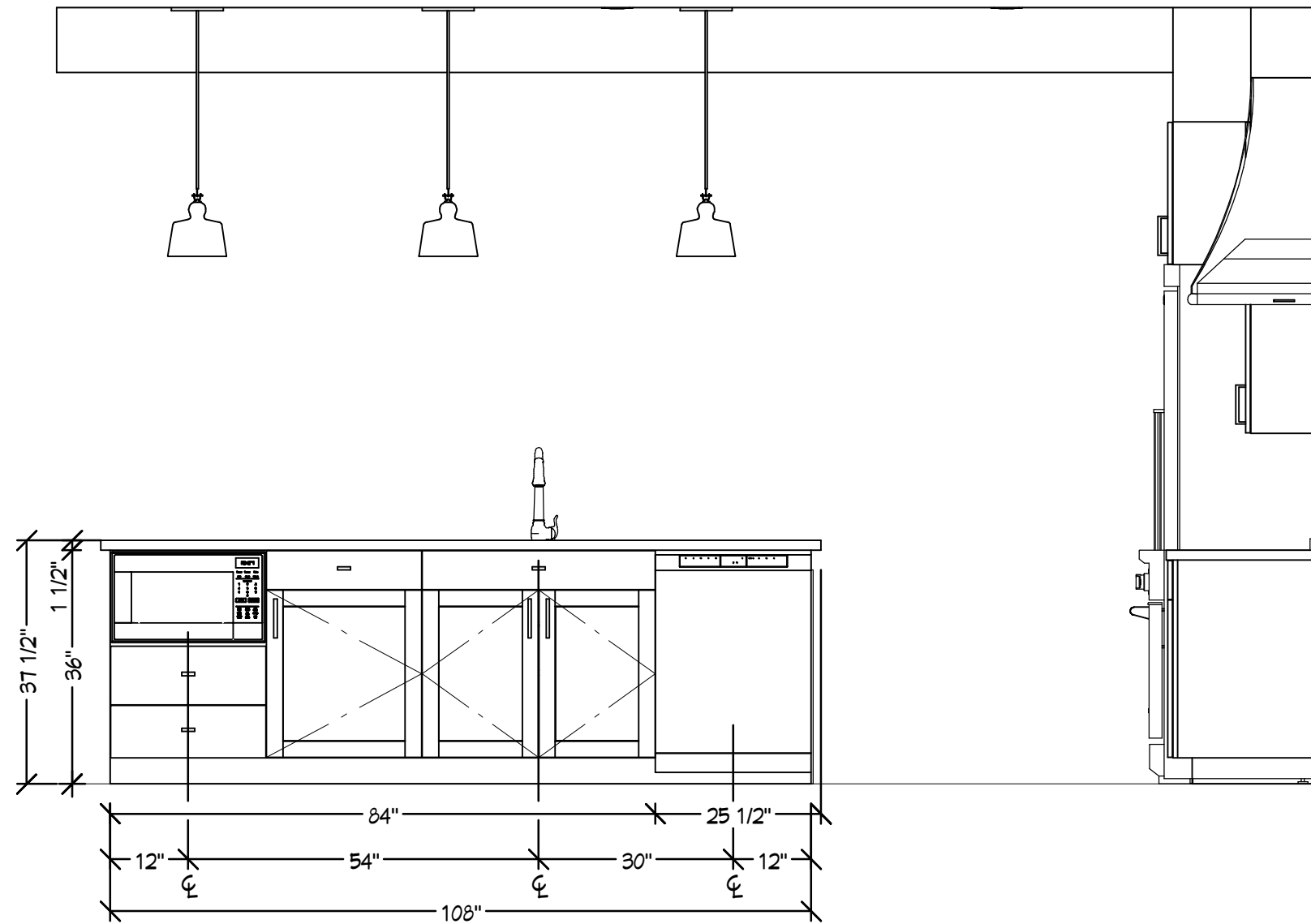




**A RANGE ELEVATION**  
1/2" = 1'



**B SINK ELEVATION**  
1/2" = 1'



E3 ISLAND ELEVATION  
 1/2" = 1'