



SCOPE

Lauren and Calvin Johnson sought to remodel their existing ensuite bathroom to improve circulation, functionality, and overall spatial efficiency. The existing water closet and hallway configuration created awkward transitions and underutilized square footage, while fixed windows and existing structural columns established key design constraints.

The proposed layout relocates the water closet to open the primary bath area and create a more functional relationship between the bedroom, bathroom, and closet. Separate vanities, full-height cabinetry, and a dedicated makeup area provide additional storage and improved daily functionality while maintaining an open visual feel.

A freestanding tub was positioned adjacent to the primary vanity area, paired with floating shelving to reinforce material continuity throughout the space. Quartz surfaces, radiant flooring, towel warmers, and a large dual shower contribute to a more elevated and comfortable user experience. A palette of sage green, warm neutrals, and light wood tones creates a calm transitional aesthetic that balances warmth, longevity, and contemporary detailing.

**Woodside, CA
Johnson Bathroom Project**

Clients: Lauren & Calvin Johnson
Designed by: Adrian Dufour

SHEET INDEX

- 1. COVER PAGE
- 2. MOOD BOARD
- 3. BATHROOM PLAN
- 4. ELECTRICAL PLAN
- 5. NOTES
- 6-8. BATHROOM ELEVATIONS



①

MOOD BOARD SPECIFICATION

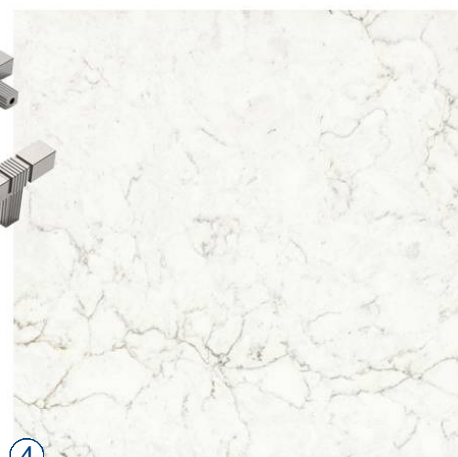
- ① INSPIRATION PHOTO
- ② CHANTILLY LACE - BENJAMIN MOORE
- ③ AMERDECO 5" PULLS
MODEL: J5GKFDSH
- ④ CORIAN QUARTZ BIANCO MARMOR
- ⑤ VIATERA GEMINI QUARTZ
- ⑥ BRIDGEWOOD, SHAKER DOOR
WHITE OAK SPECIES, LIGHT NATURAL FINISH
- ⑦ DAL TILE PORCELAIN PLANK TILE
STYLE: BEIGE CRAZE
- ⑧ BENJAMIN MOORE - SAGE TINT 458



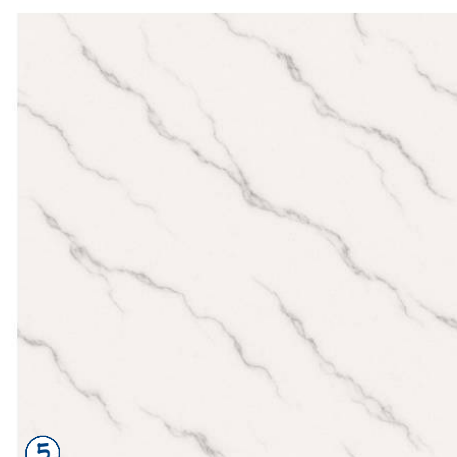
②



③



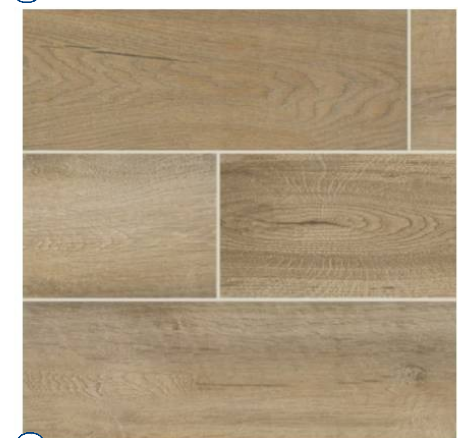
④



⑤



⑥

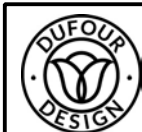


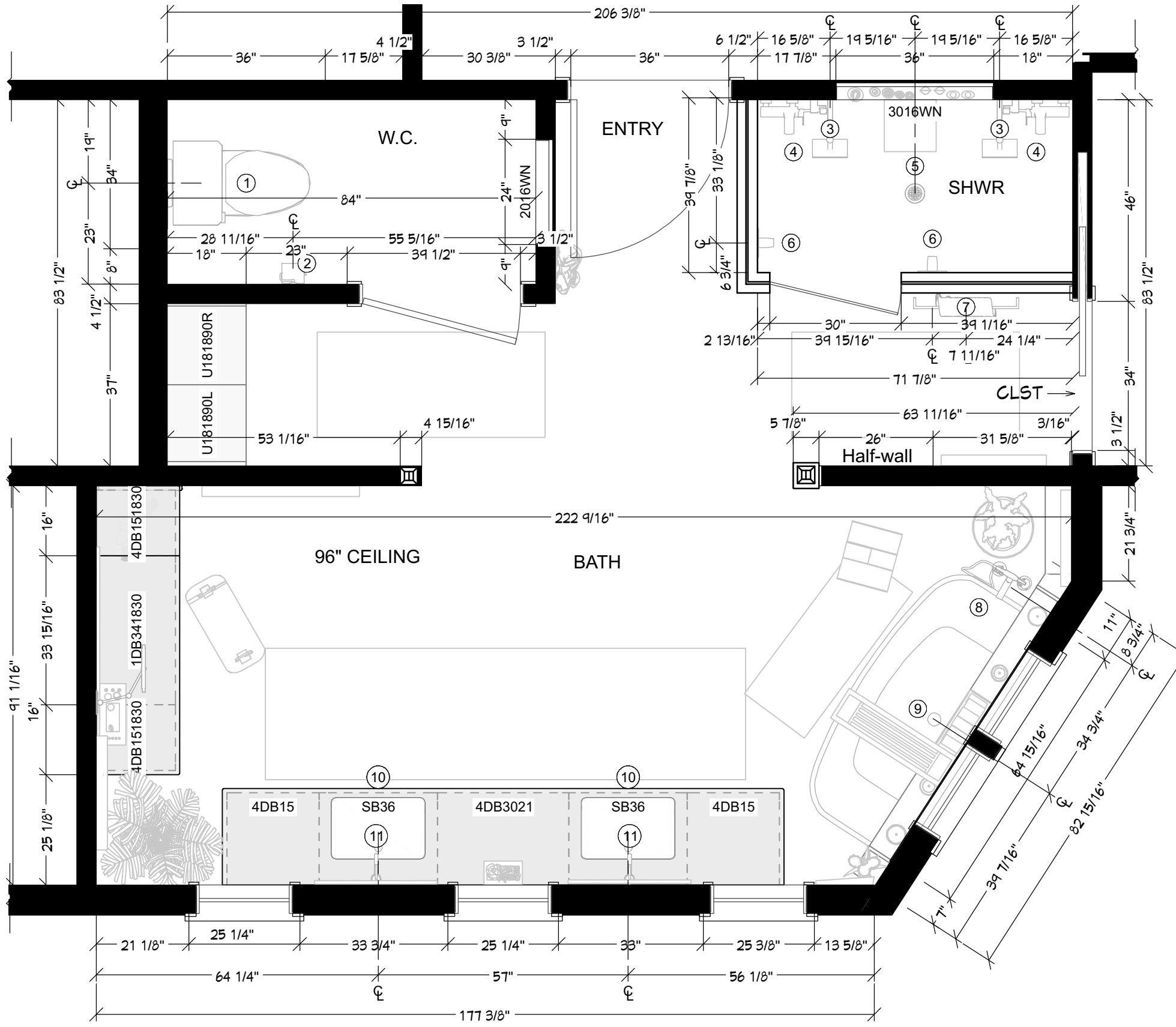
⑦



⑧

MOOD BOARD
No Scale





- FLOOR PLAN SPECIFICATIONS**
- 1 KOHLER REACH 1.28 GPF ONE-PIECE COMPACT ELONGATED CHAIR HEIGHT TOILET MODEL:K-78080-0
 - 2 BUTTON TOILET PAPER HOLDER DELTA TEMPASSURE 17T SERIES
 - 3 THERMOSTATIC SHOWER SYSTEM MODEL:DSS-ARA-17T01SS
 - 4 SHOWER MIXER WITH SHOWER SET
 - 5 SHOWER DRAIN K-9132
 - 6 HOOP HANDLE
 - 7 KOHLER TOWEL WARMER
 - 8 PEDESTAL TUB FAUCET
 - 9 KOHLER IRVINE 59" X 29-1/2" FREESTANDING BATH MODEL:K-26079-0
 - 10 KOHLER SINK K-2215
 - 11 KOHLER FAUCET K-14402-4A

NOTES
See notes on Page 6.

PROPOSED FLOOR PLAN
7/16" = 1'

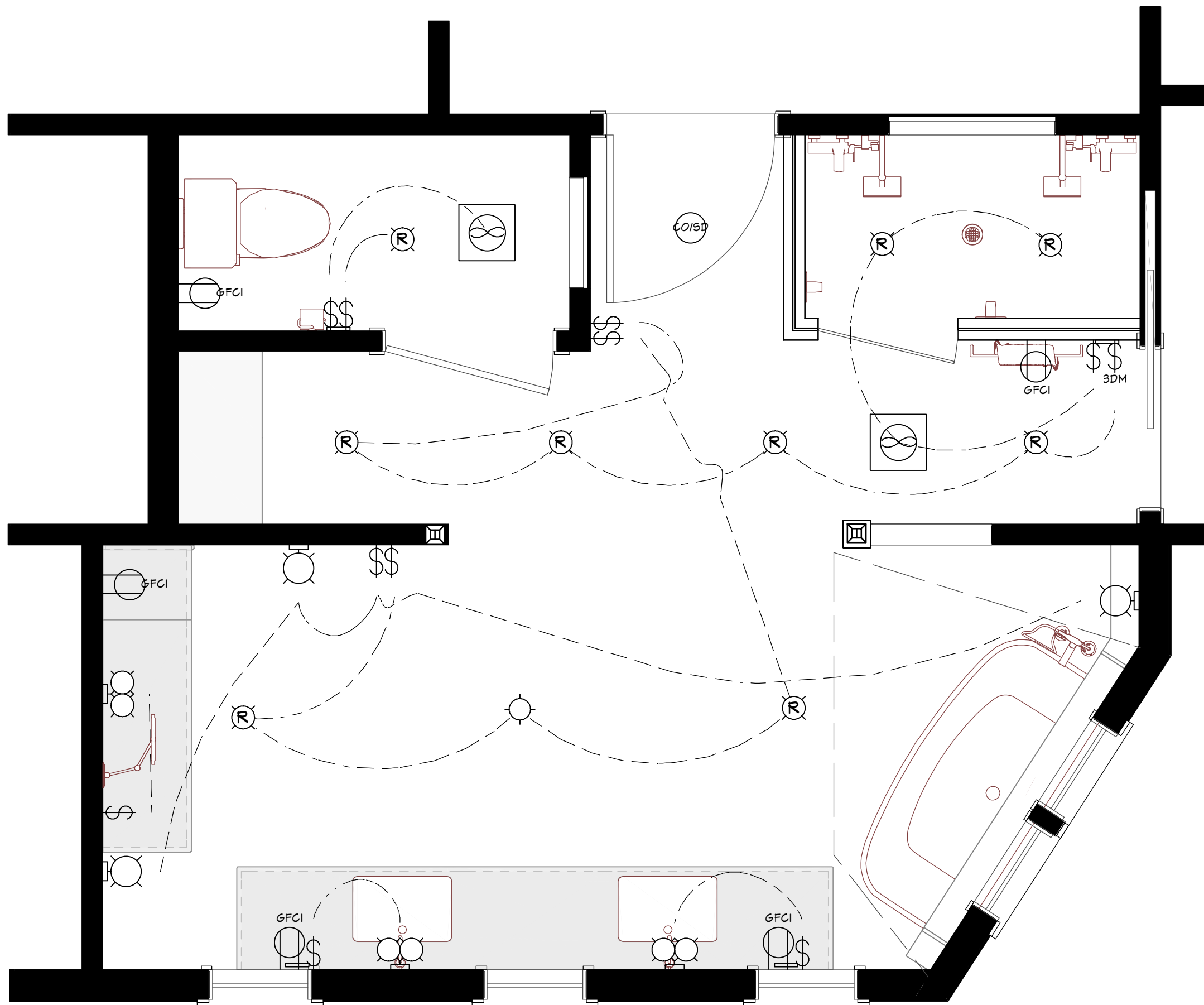
DUFOUR DESIGN
Dufour Design
1700 El Camino Real S San Francisco, CA. 94080
415-916-2968
dufour-design.com

Woodside, CA
JOHNSON BATH








BATHROOM PLAN
DRAWN BY: Adrian Dufour | DATE: 10/2023

SHEET NUMBER
3
REVISION #:





ELECTRICAL LEGEND

- 
2 GANG SWITCH
- 
3-WAY DIMMER
- 
ART LIGHT
- 
CO/SMOKE DETECTOR
- 
EXHAUST
- 
GFCI
- 
HENRY BATH VANITY

NOTES

See notes on Page 6.

**BATHROOM
RENDERING**

No Scale



Dufour Design

1700 El Camino Real S San Francisco, CA. 94080
415-916-2968 dufour-design.com

Woodside, CA

JOHNSON BATH

ELECTRICAL PLAN

DRAWN BY: Adrian Dufour | DATE: 10/2023

SHEET NUMBER

4

REVISION #:

BATHROOM NOTES

GENERAL

- 1 Verify all plumbing fixture locations, rough-in dimensions, and framing conditions prior to installation.
- 2 Maintain required NKBA and applicable code clearances at toilets, lavatories, showers, tubs, and circulation paths.
- 3 Coordinate all plumbing fixtures, cabinetry, accessories, and finish materials with approved drawings and specifications.

FLOORING & WATERPROOFING

- 1 Install subfloor preparation and tile underlayment in accordance with manufacturer requirements.
- 2 Slope shower floor toward drain as required for proper drainage.
- 3 Provide waterproof membrane and sealants at all wet areas in accordance with applicable code and manufacturer requirements.
- 4 Coordinate floor tile transitions and thresholds for clean and continuous finish conditions.

WALL FINISHES

- 1 Provide moisture-resistant backing materials at all wet areas in accordance with applicable code and manufacturer requirements.
- 2 Install tile, trim, and wall finishes for clean alignment and transitions at adjacent materials.
- 3 Coordinate wall finish materials, paint, and tile layouts with approved finish selections and interior elevations.

CEILING & VENTILATION

- 1 Provide moisture-resistant ceiling finishes within bathroom and wet-area environments.
- 2 Vent exhaust fans to exterior in accordance with applicable code and manufacturer requirements.
- 3 Coordinate lighting, ventilation, and ceiling elements with reflected ceiling and electrical plans where applicable.

PLUMBING FIXTURES & ROUGH-INS

- 1 Verify all plumbing fixture rough-in dimensions and locations prior to installation.
- 2 Coordinate plumbing supply, waste, venting, and fixture locations with cabinetry, framing, and finish conditions.
- 3 Install plumbing fixtures and trim in accordance with manufacturer requirements and applicable plumbing code requirements.
- 4 Coordinate shower controls, shower heads, drains, and tub fixtures with approved elevations and specifications.

ELECTRICAL & LIGHTING

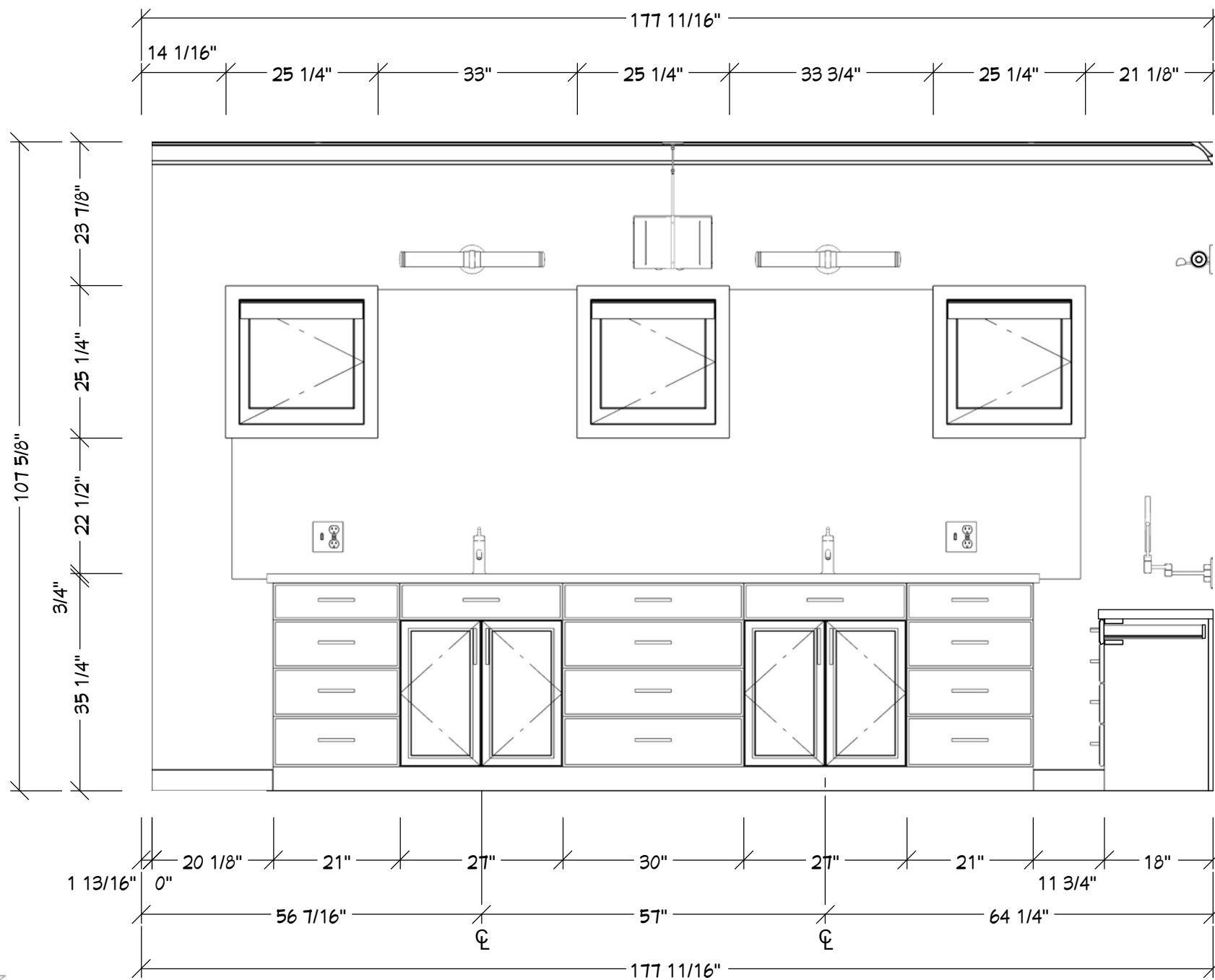
- 1 Provide GFCI-protected receptacles at bathroom countertop and wet-area locations as required by applicable electrical code.
- 2 Coordinate lighting fixture locations with mirrors, cabinetry, ceiling conditions, and finish layouts.
- 3 Install damp-rated or wet-rated fixtures where required.
- 4 Coordinate switches, dimmers, exhaust fans, and lighting controls with approved electrical plans and applicable code requirements.

DOORS & HARDWARE

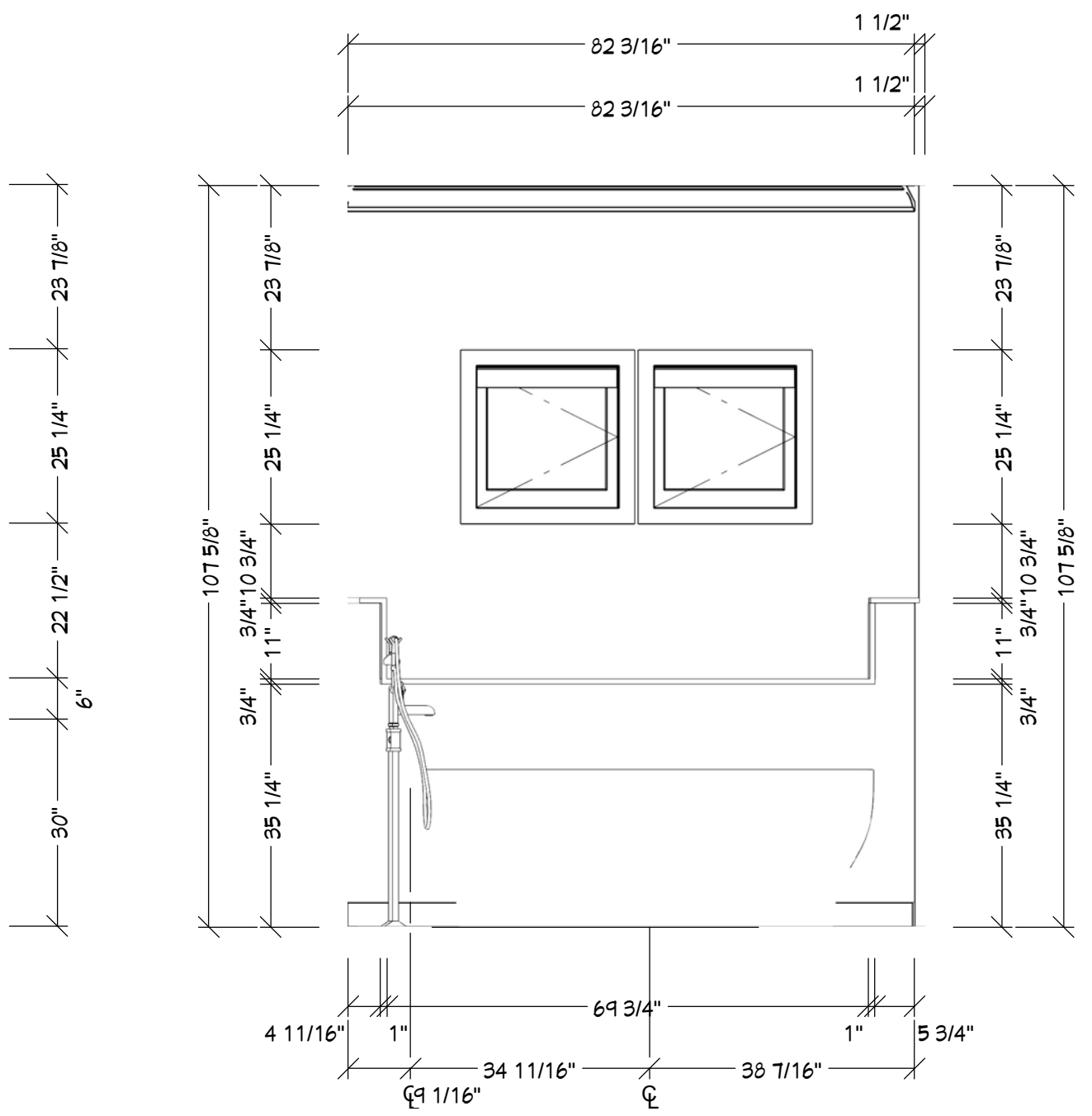
- 1 Verify required door clearances, swing conditions, and circulation paths prior to installation.
- 2 Coordinate door hardware, finish selections, and mounting locations with approved schedules and elevations.
- 3 Install thresholds and transitions for clean alignment between adjacent finish materials and floor conditions.

ACCESSORIES & GRAB BARS

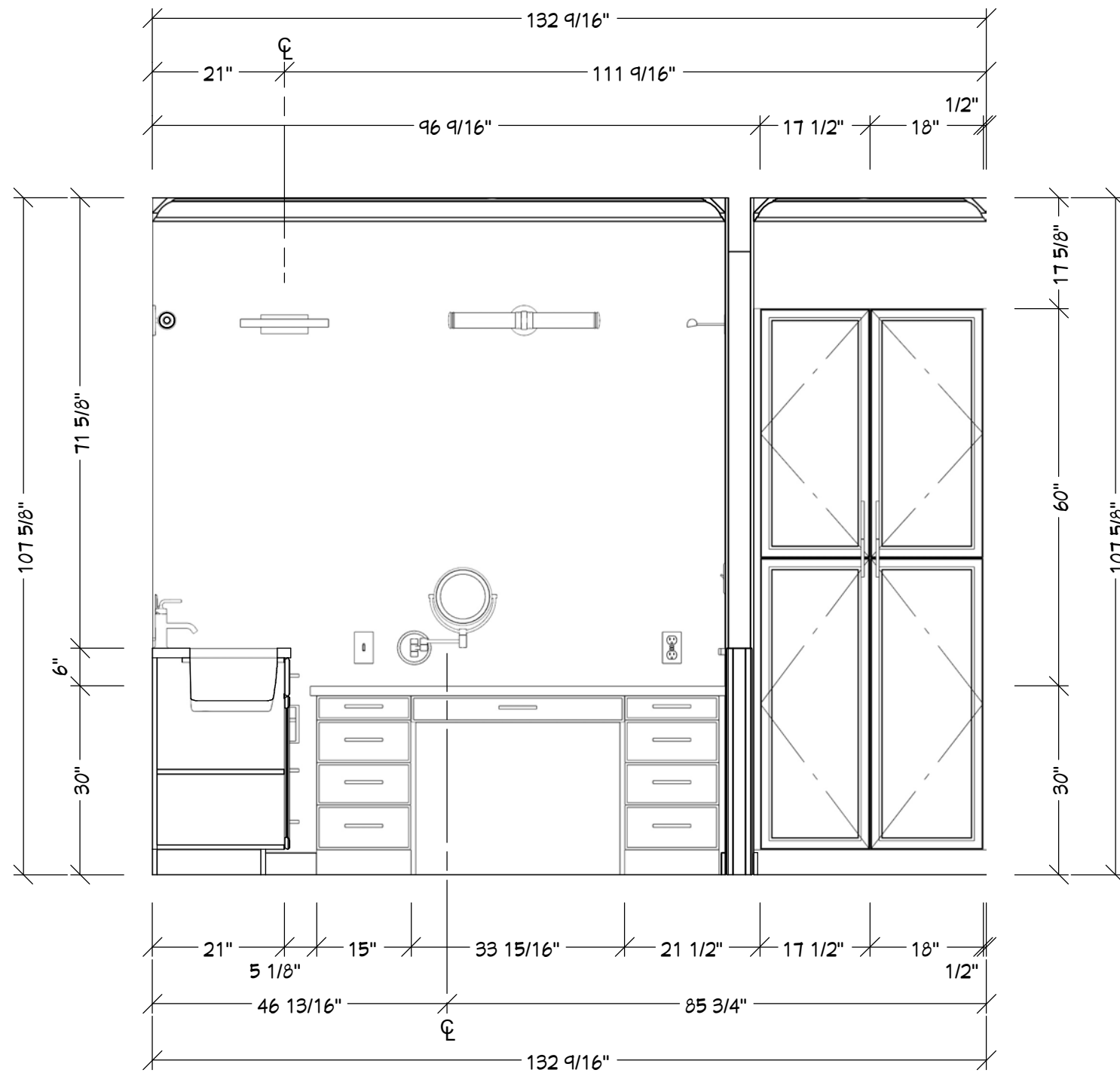
- 1 Coordinate accessory and mirror locations with elevations, cabinetry, and fixture layouts.
- 2 Provide blocking as required for grab bars, accessories, and wall-mounted hardware.
- 3 Install accessories and grab bars at locations and mounting heights indicated on drawings or as required by applicable code.



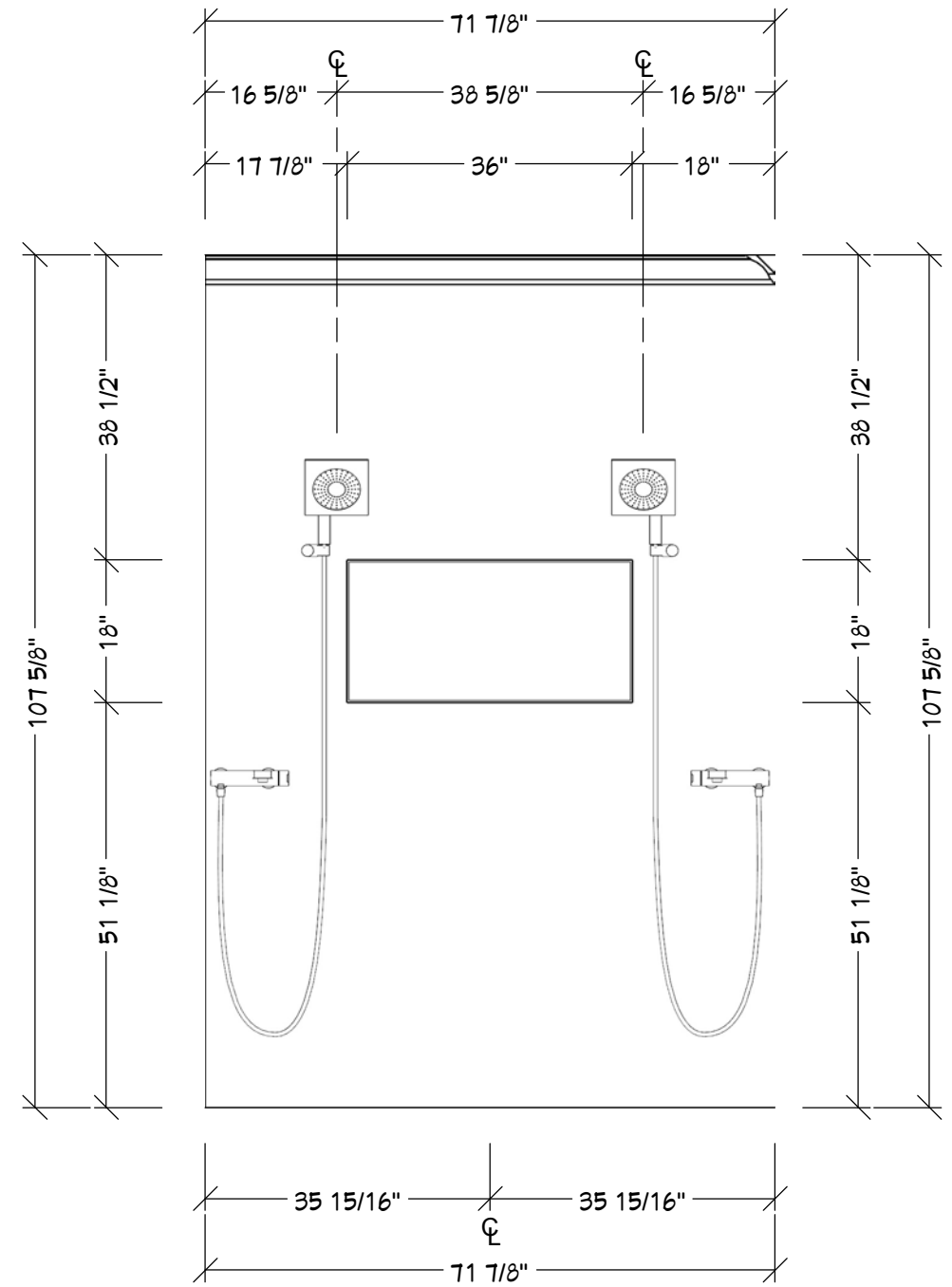
E1 BATHROOM ELEVATION
1/2" = 1'



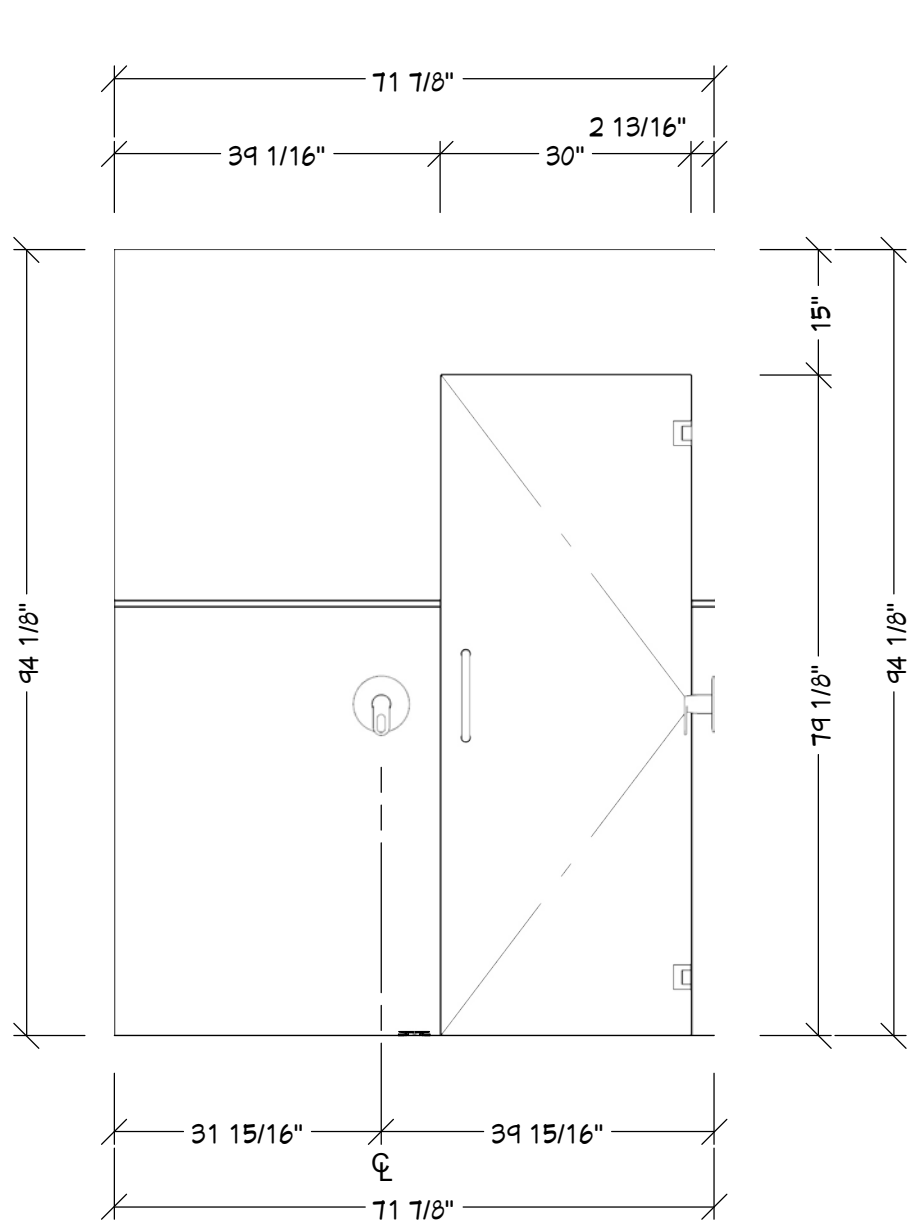
E2 BATHROOM ELEVATION
1/2" = 1'



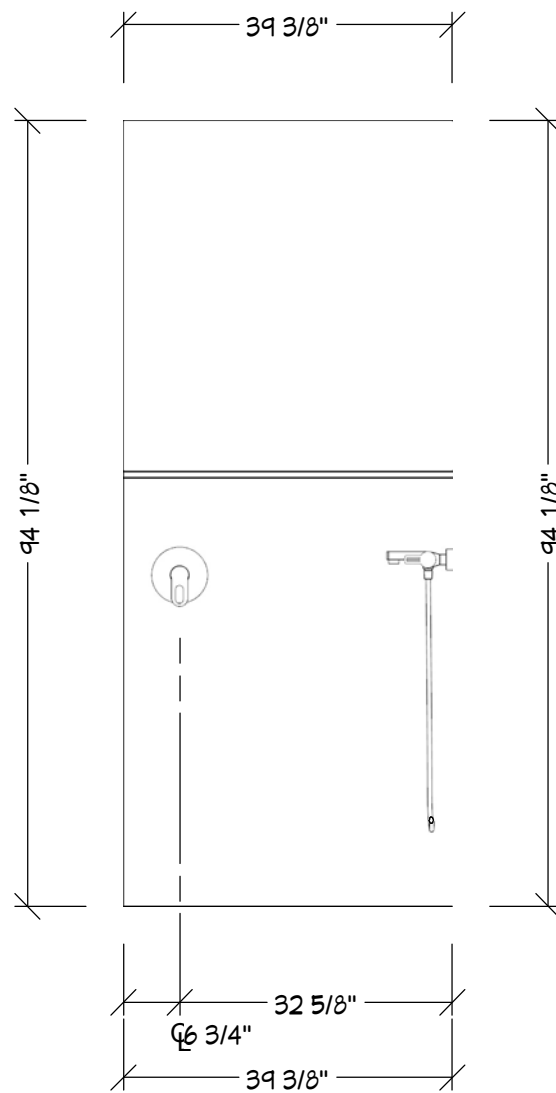
E3 BATHROOM ELEVATION
1/2" = 1'



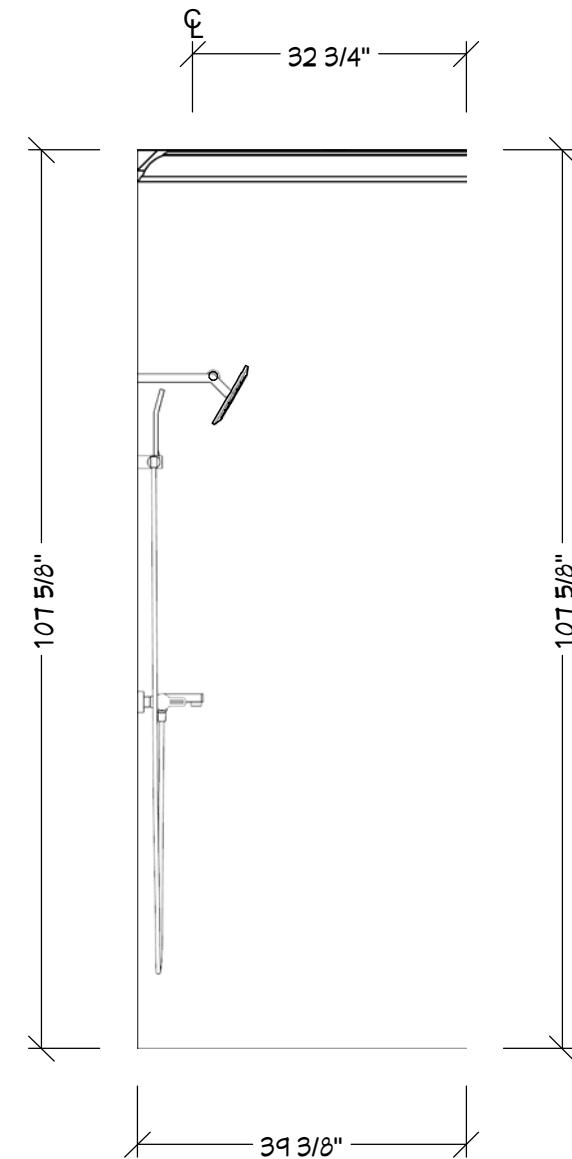
E4 BATHROOM ELEVATION
1/2" = 1'



E5 BATHROOM ELEVATION
1/2" = 1'



E6 BATHROOM ELEVATION
1/2" = 1'



E7 BATHROOM ELEVATION
1/2" = 1'