

# INTERIOR ARCHITECTURE Portfolio



**Adrian Dufour**

# 1144 Clairpoint Way, Pacifica, CA

Mixed-Use Residential – Live/Work Housing Model



## Concept

This mixed-use residential project proposes a low-density, coastal live-work model in Pacifica, CA, integrating housing, retail, and community-based enterprise within a single footprint.

The building is structured to support resident-led commercial activity, where occupants participate in the operation or ownership of ground-floor businesses, creating a resident-driven economic ecosystem.

Managed through a nonprofit framework, the project prioritizes long-term stability, accessibility, and pathways to ownership while maintaining a scale appropriate to the coastal context.

# 1144 Clairpoint Way, Pacifica, CA

## Savor Restaurant Renderings

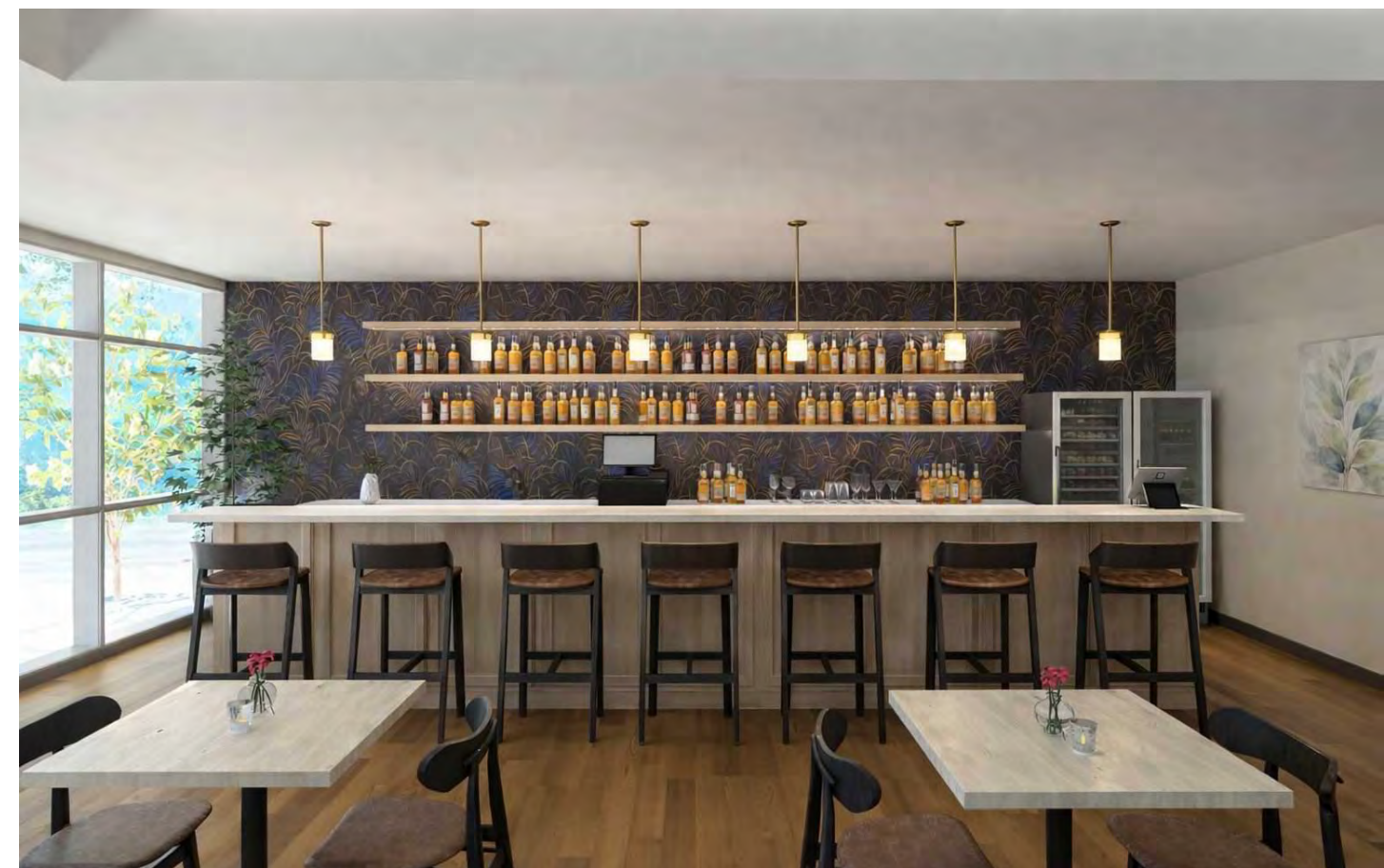


**Main Dining - Ocean-facing**

- The anchor restaurant is organized with clear front- and back-of-house zoning, supporting efficient circulation and direct service flow.



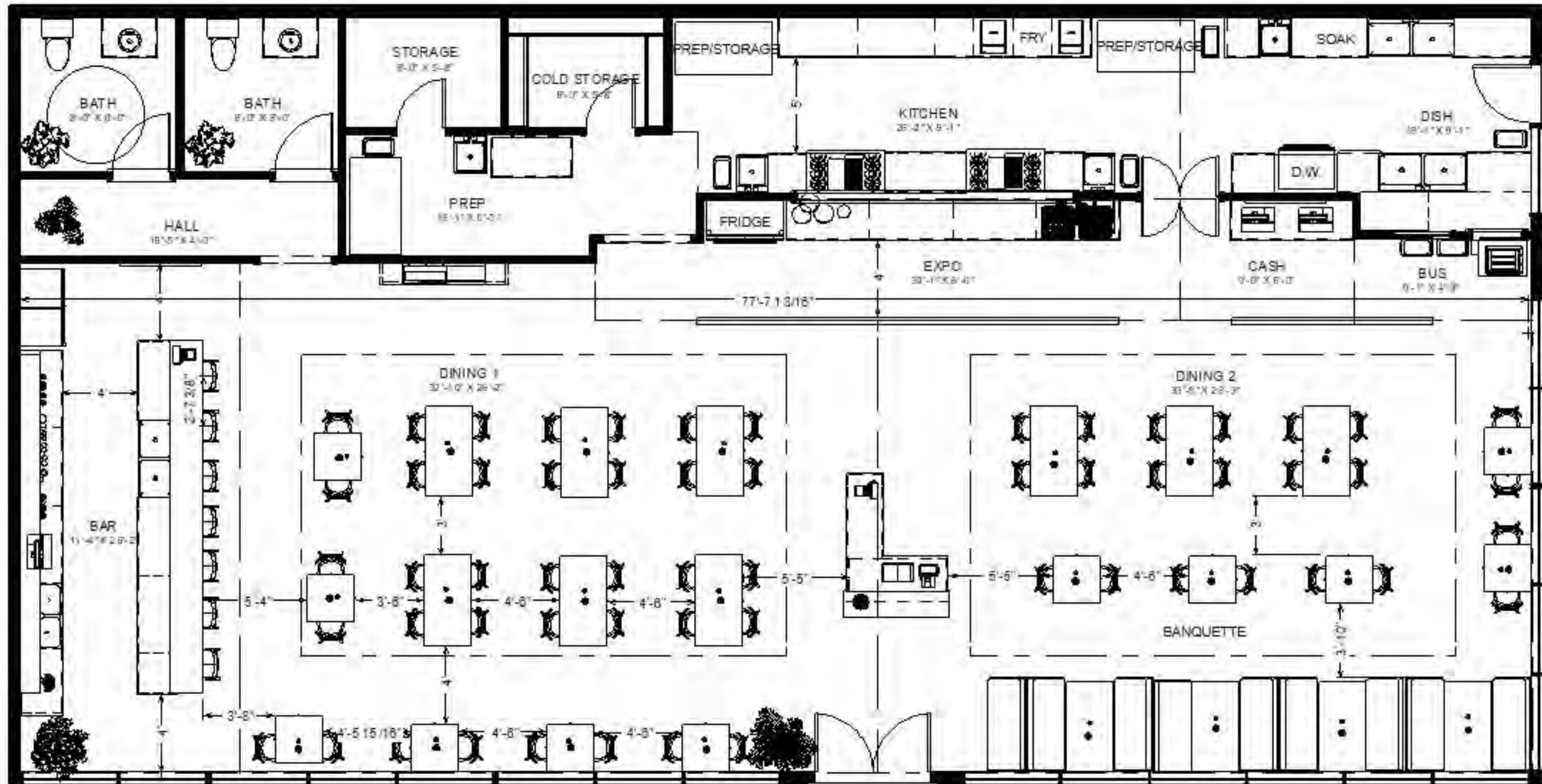
**Service Station - Server handoff**



**Bar - Service anchor**

# 1144 Clairpoint Way, Pacifica, CA

## Savor Restaurant Plan



### Floor Plan

- Kitchen, prep, dish, and service areas are organized as distinct but adjacent work zones, minimizing cross-traffic while maintaining direct functional relationships.
- Dining layouts support flexible seating arrangements, while maintaining clear service paths and visual connection to the ocean-facing frontage.

# 1144 Clairpoint Way, Pacifica, CA

## Apartment Renderings



**Dining - Ocean views**

- Units are oriented to maximize ocean views, natural light, and storage, with open living areas anchored by kitchen islands.



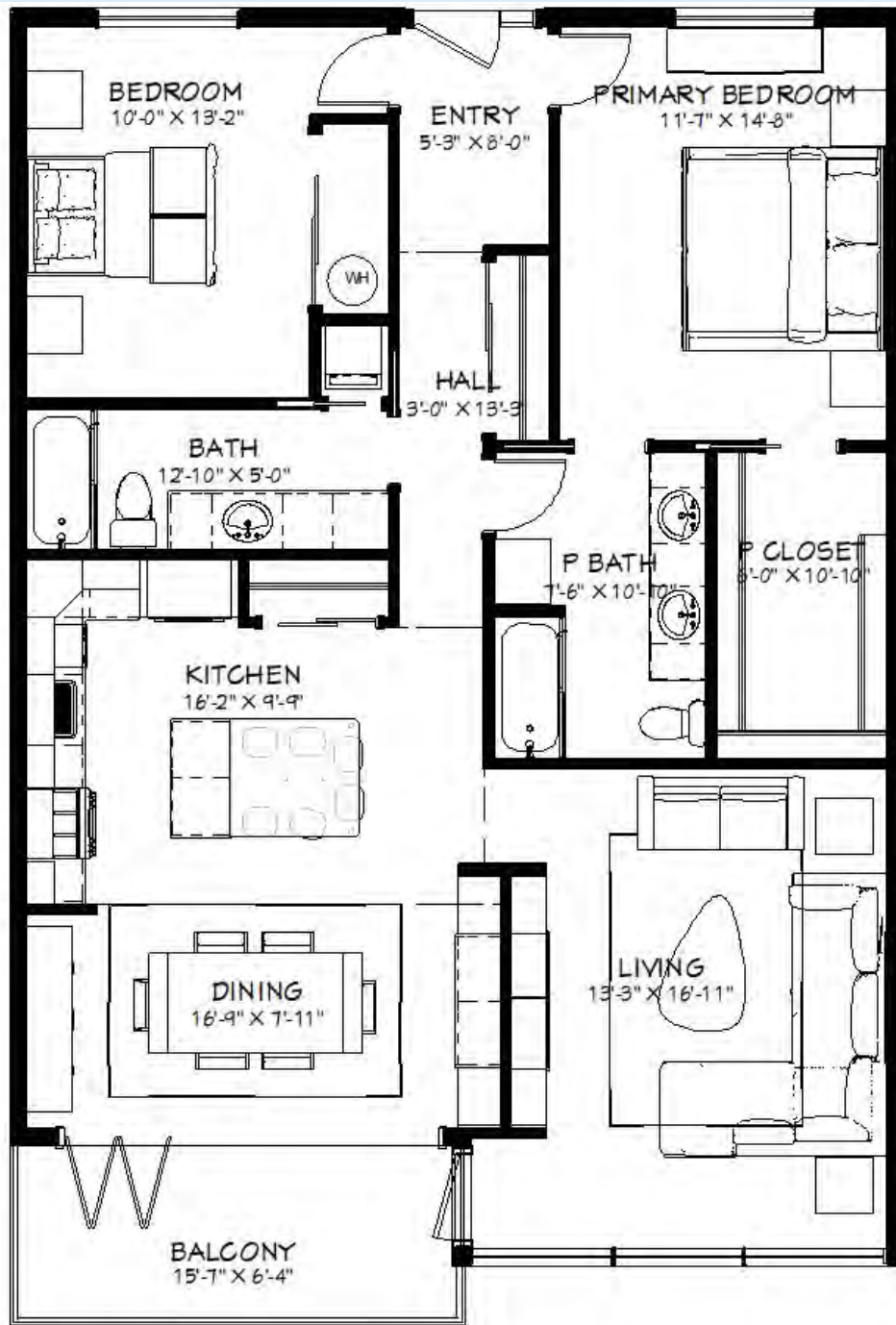
**Kitchen - Island-centered layout**



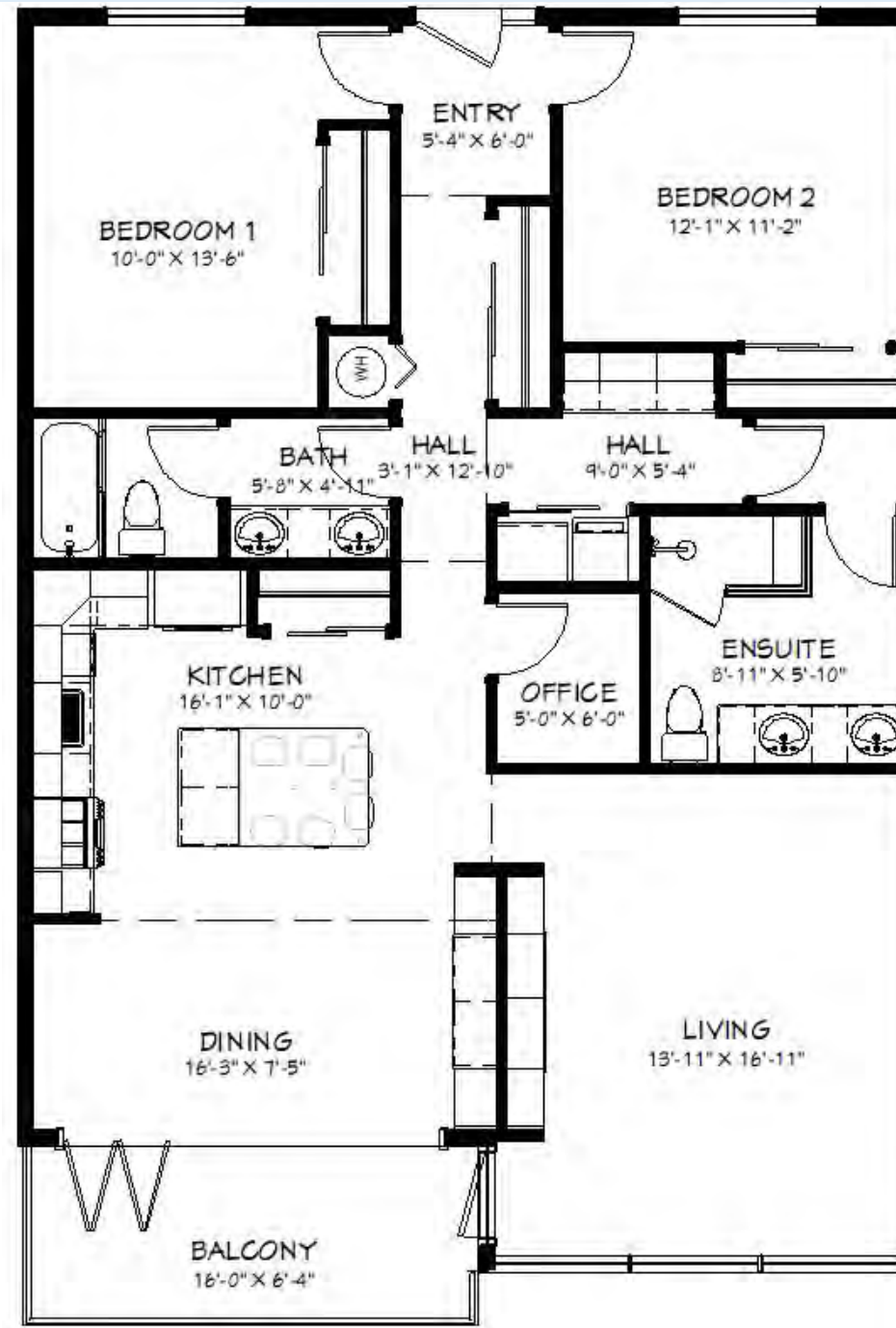
**Living - Open plan with view corridor**

# 1144 Clairpoint Way, Pacifica, CA

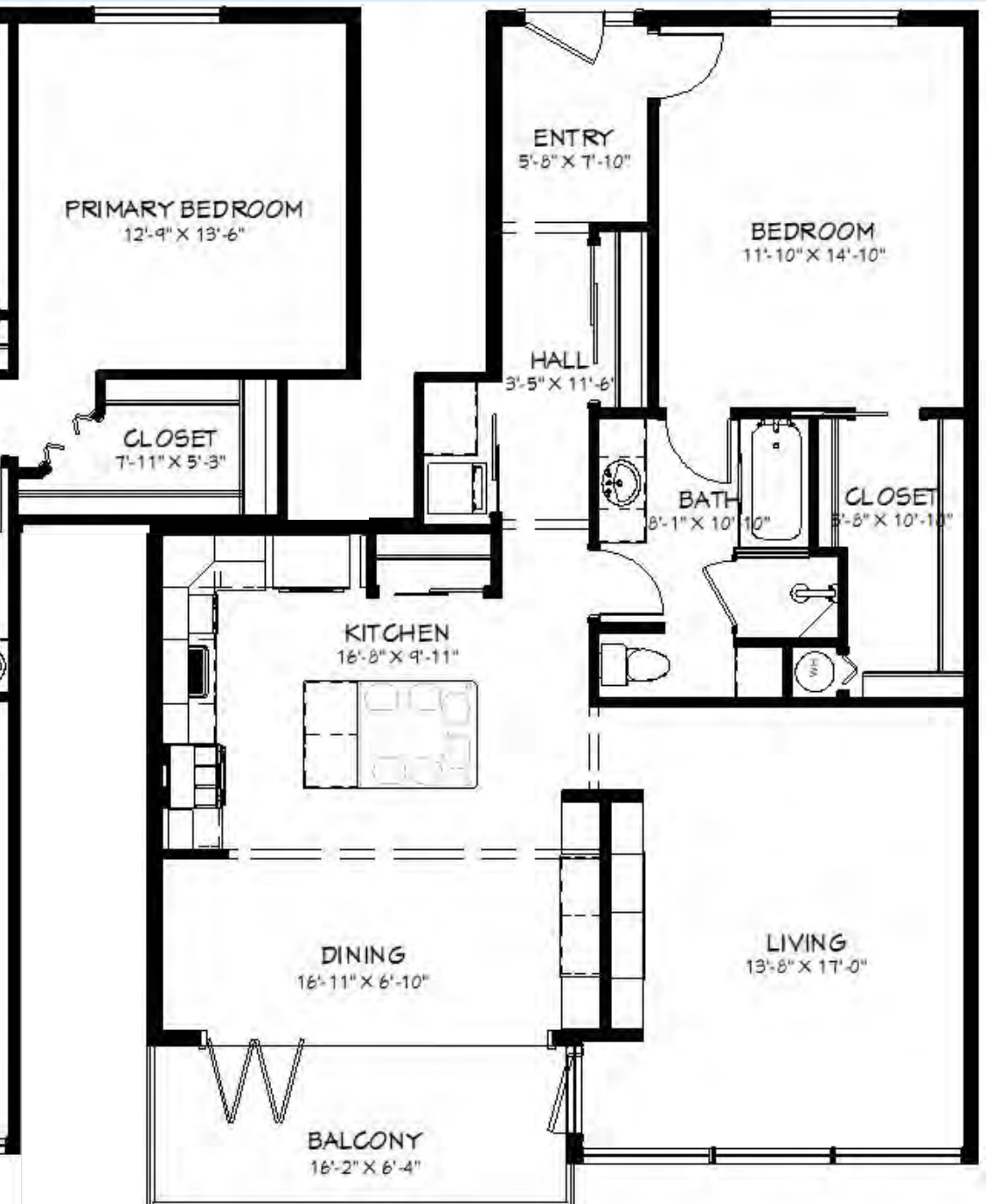
## Apartment Floor Plans



**Two Bedroom**



**Three Bedroom**

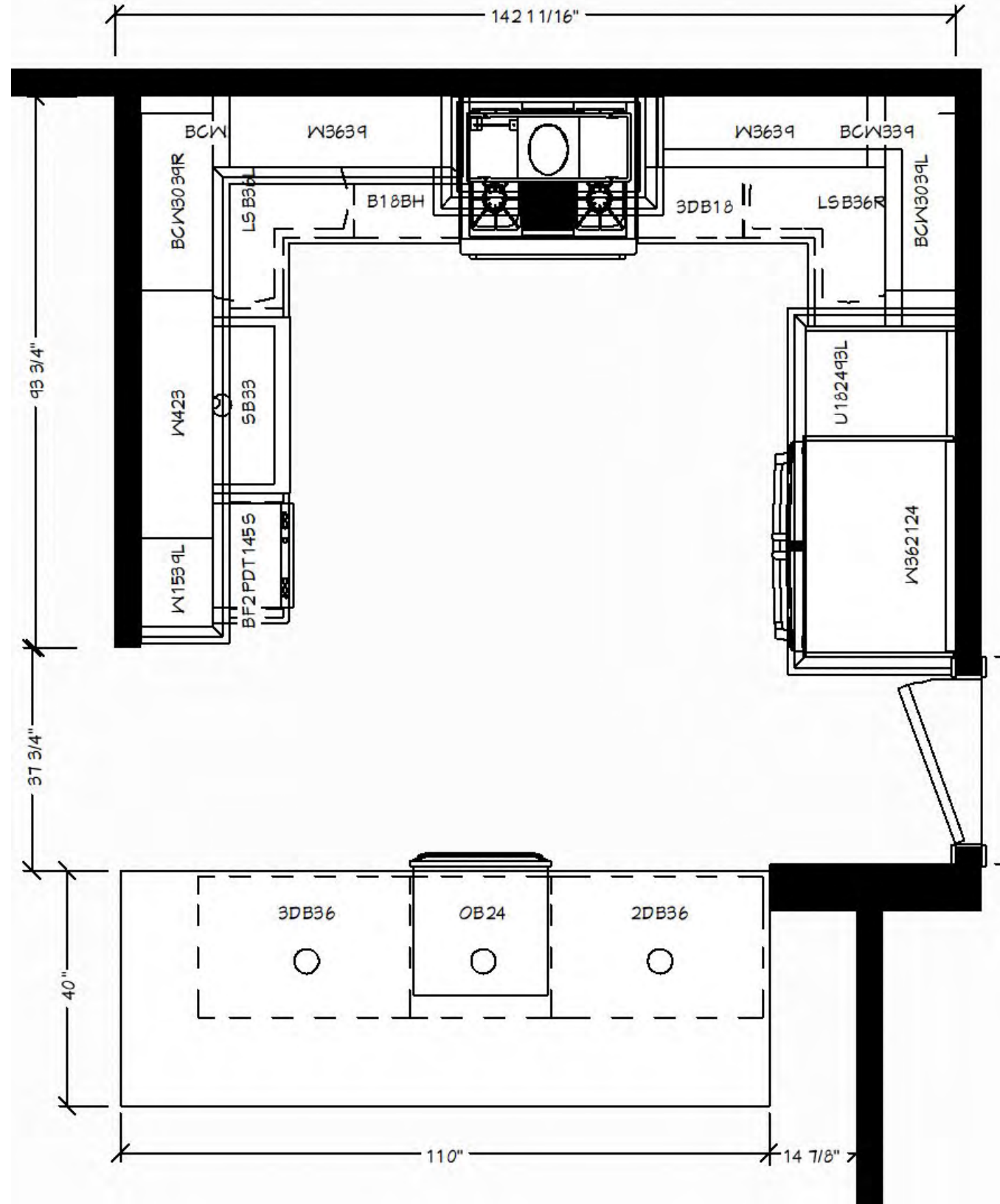


**One Bedroom**

- Layouts are developed within a consistent structural framework, demonstrating flexibility and efficiency across all three unit types.
- The residential units are designed to provide spacious, light-filled living environments within a compact footprint.
- All primary living spaces and bedrooms are provided with access to natural light and ventilation, reinforcing both comfort and livability.

# Alameda de las Pulgas, San Mateo, CA

## Kitchen Remodel Documentation

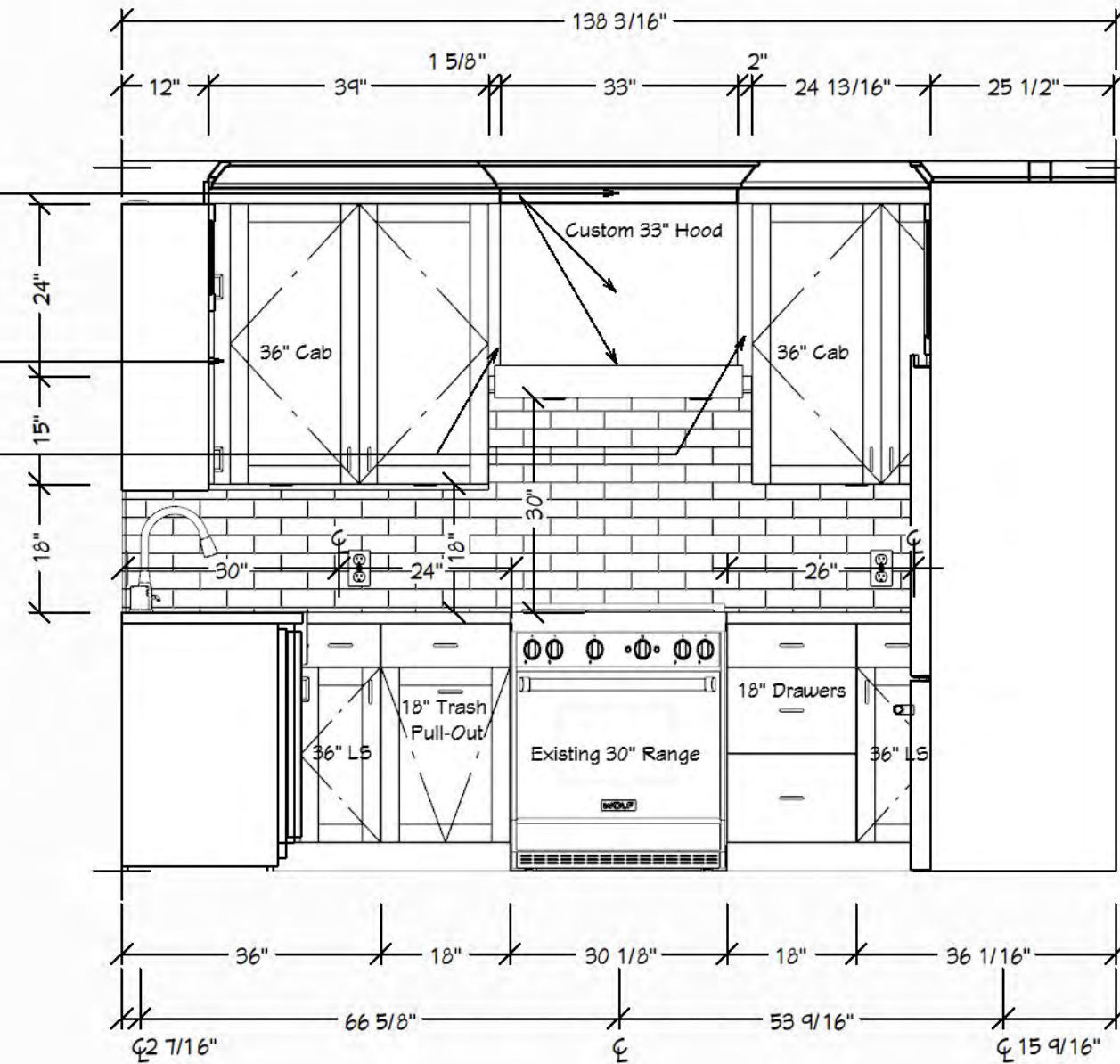


**Proposed Kitchen Plan**

Custom Hood Box: Crown molding, box, and trim.  
 27" x 46" panel for the box.  
 3 1/2" crown molding for the hood insert frame.  
 4 1/2" toe kick for trim detail.  
 \*\*SEE DETAIL ON NEXT PAGE

3" Fillers in both corners of 30" Blind Corner Cabinets.  
 Install the cabinets 3" pulled from the wall.

Add fillers to sides of box, flush with cabinets.



**Custom Range Wall Elevation**

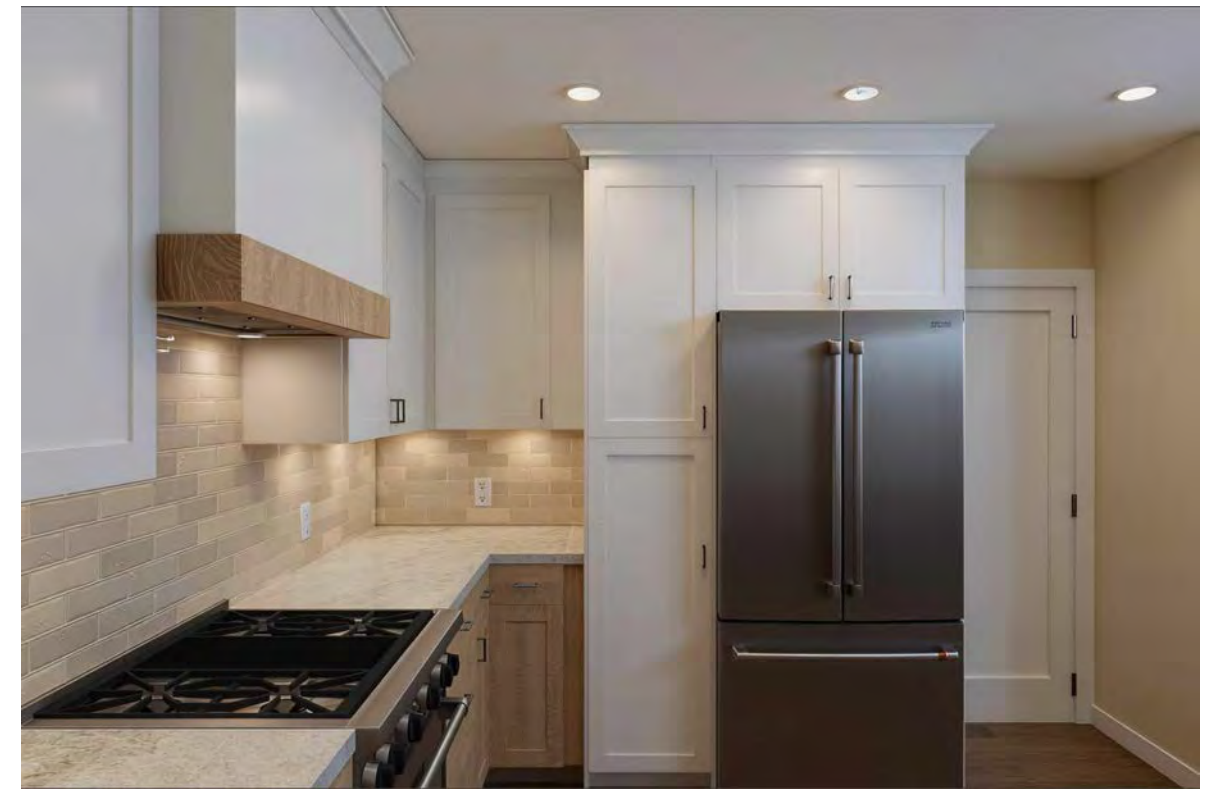
- Kitchen remodel focused on improving circulation, storage, and usability within an existing footprint.
- A 9-foot island anchors the space, providing seating, prep area, and additional storage while maintaining clear movement between zones.

# Alameda de las Pulgas, San Mateo, CA

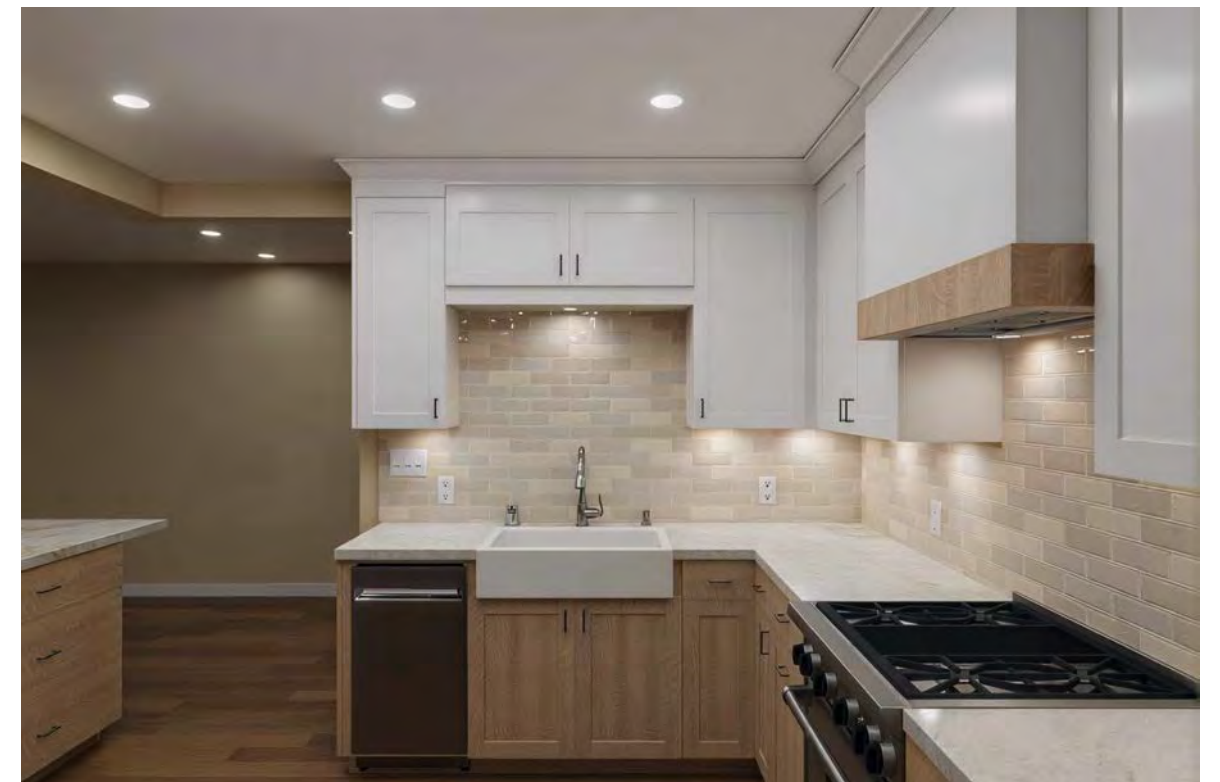
## Kitchen Remodel



**Kitchen remodel, 9' island + storage**



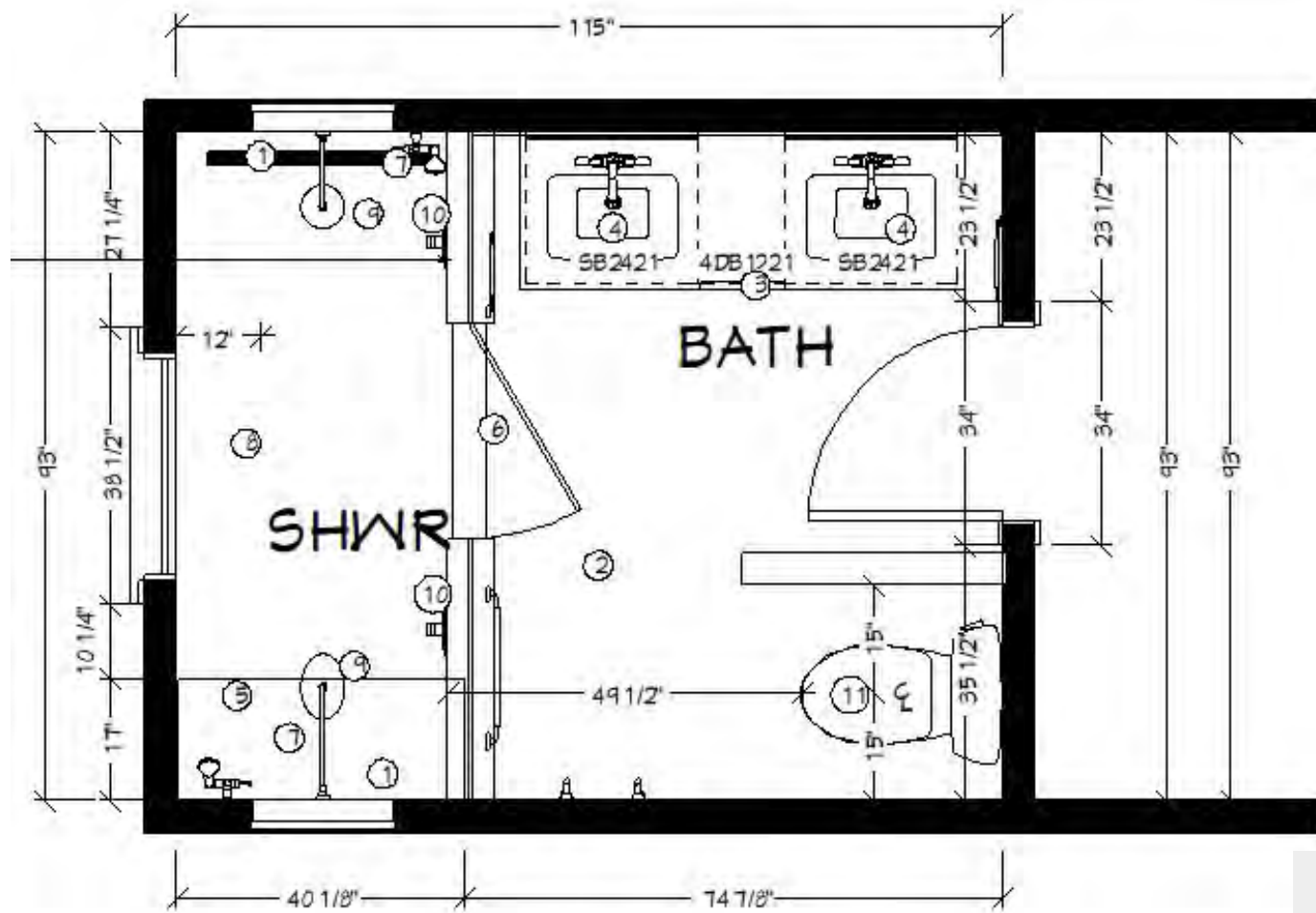
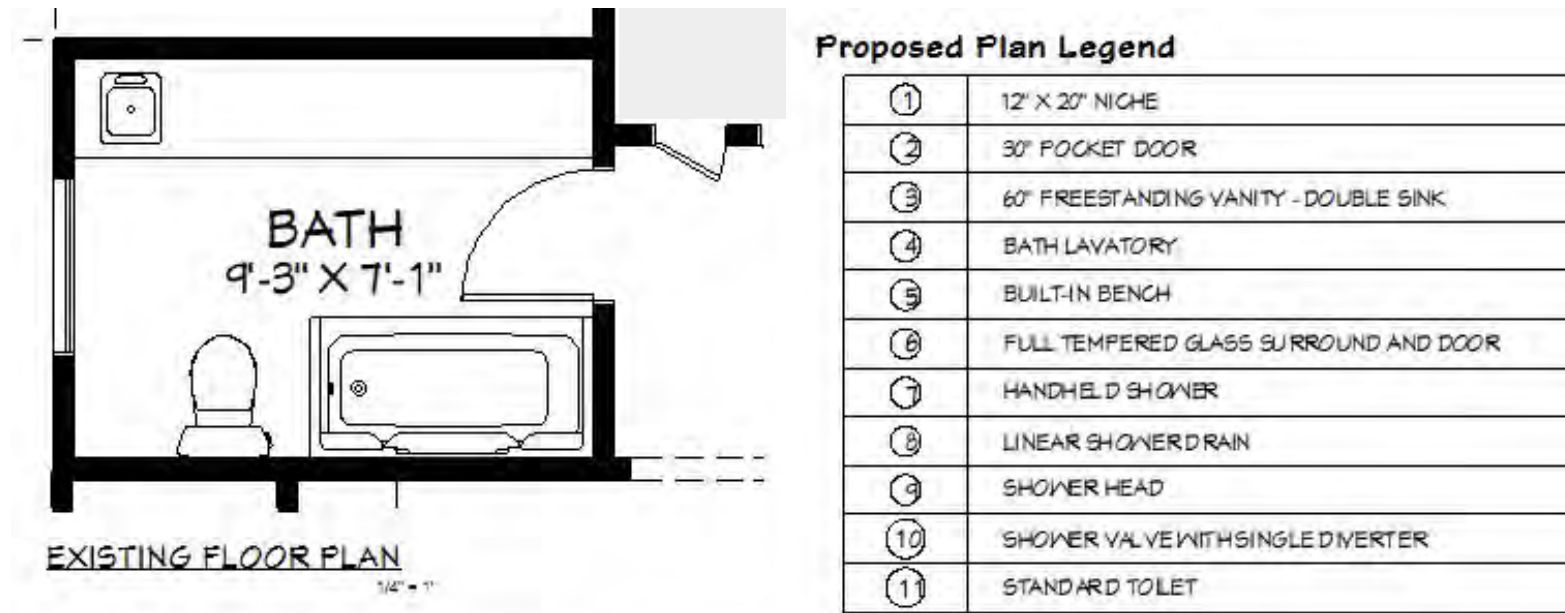
**Fridge Wall Rendering**



**Sink Wall Rendering**

# Fairfax Ave, San Mateo, CA

## Bathroom Remodel Documentation



**Proposed Bathroom Plan**

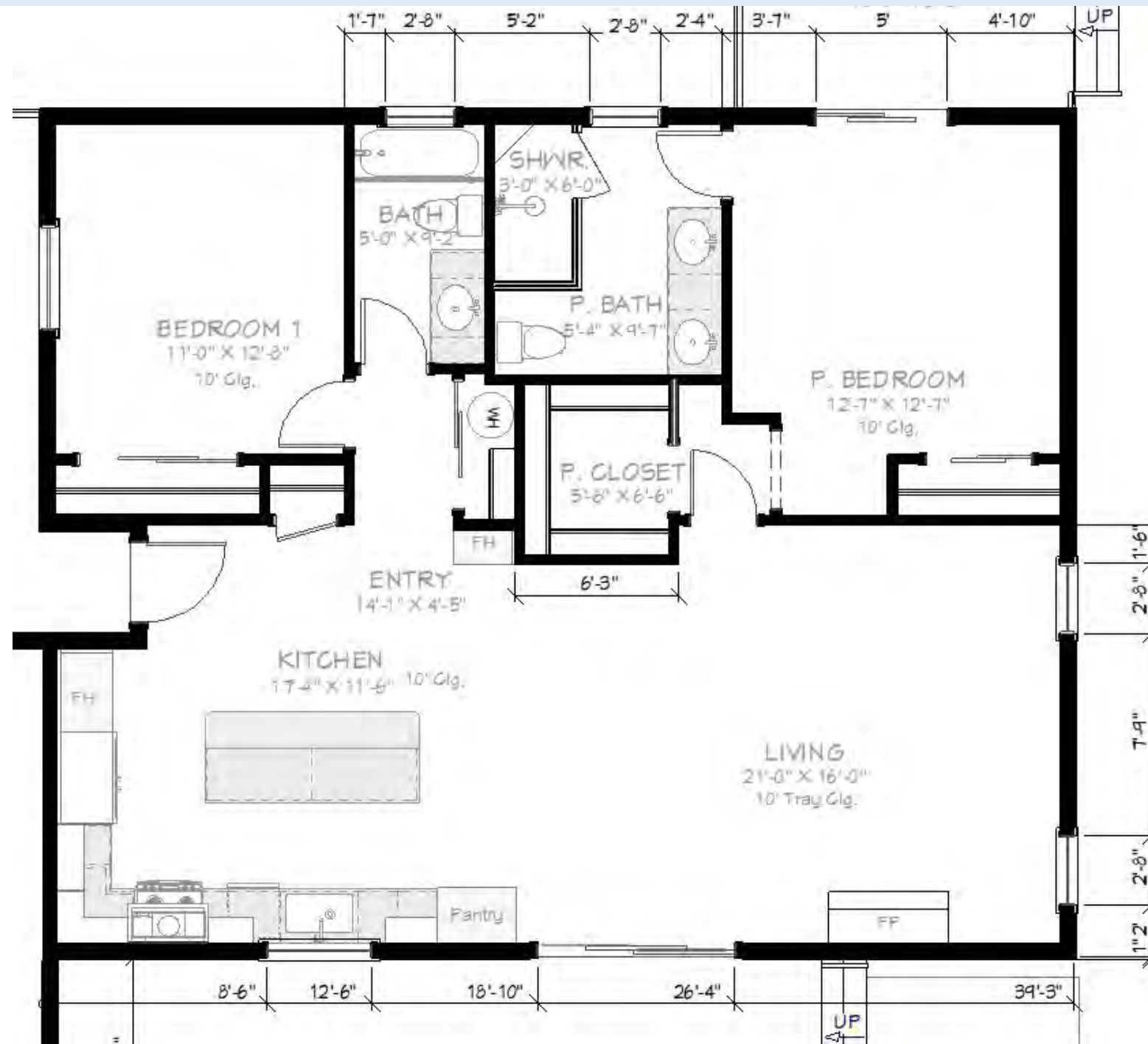
### Scope

- Bathroom remodel balancing openness and privacy within a compact footprint.
- A partial partition replaces a full water closet to maintain visual continuity while defining zones. Dual vanities and a walk-in shower improve function and comfort.
- Material selections reference traditional patterns while using durable, contemporary finishes.



# Toulouse Lane, Emerald Hills, CA

## Condo Remodel Documentation

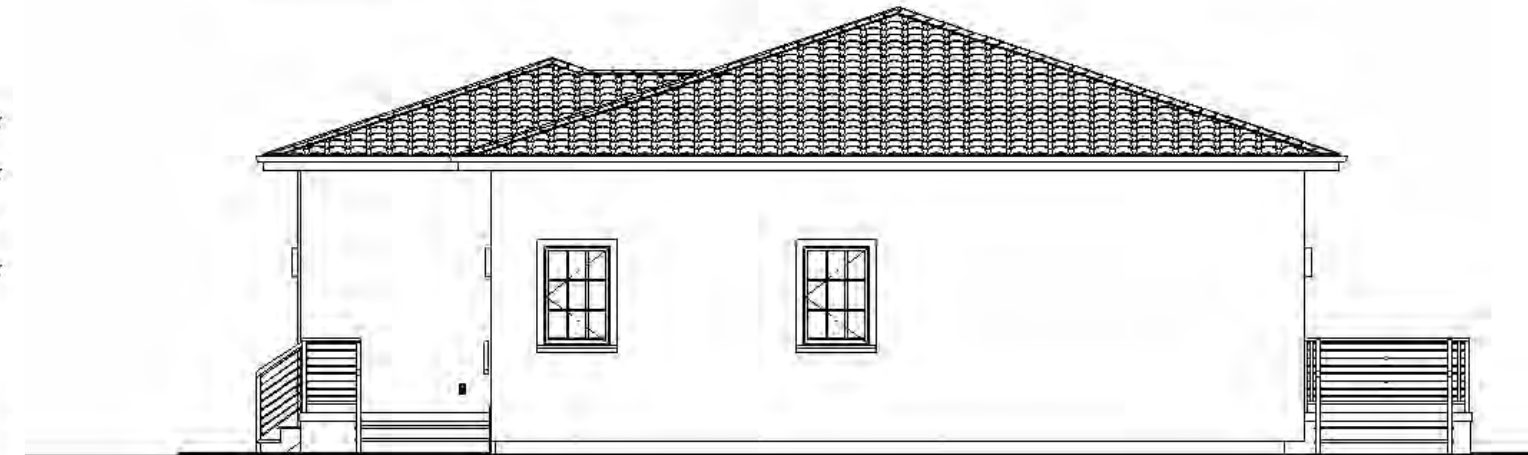


### Proposed Floor Plan

- The layout replaces a compartmentalized kitchen with an open plan anchored by a central island, while reorganizing the bedroom and bathroom zones to create a more functional primary suite.



EXTERIOR FRONT (WEST) ELEVATION  
1/4"=1'

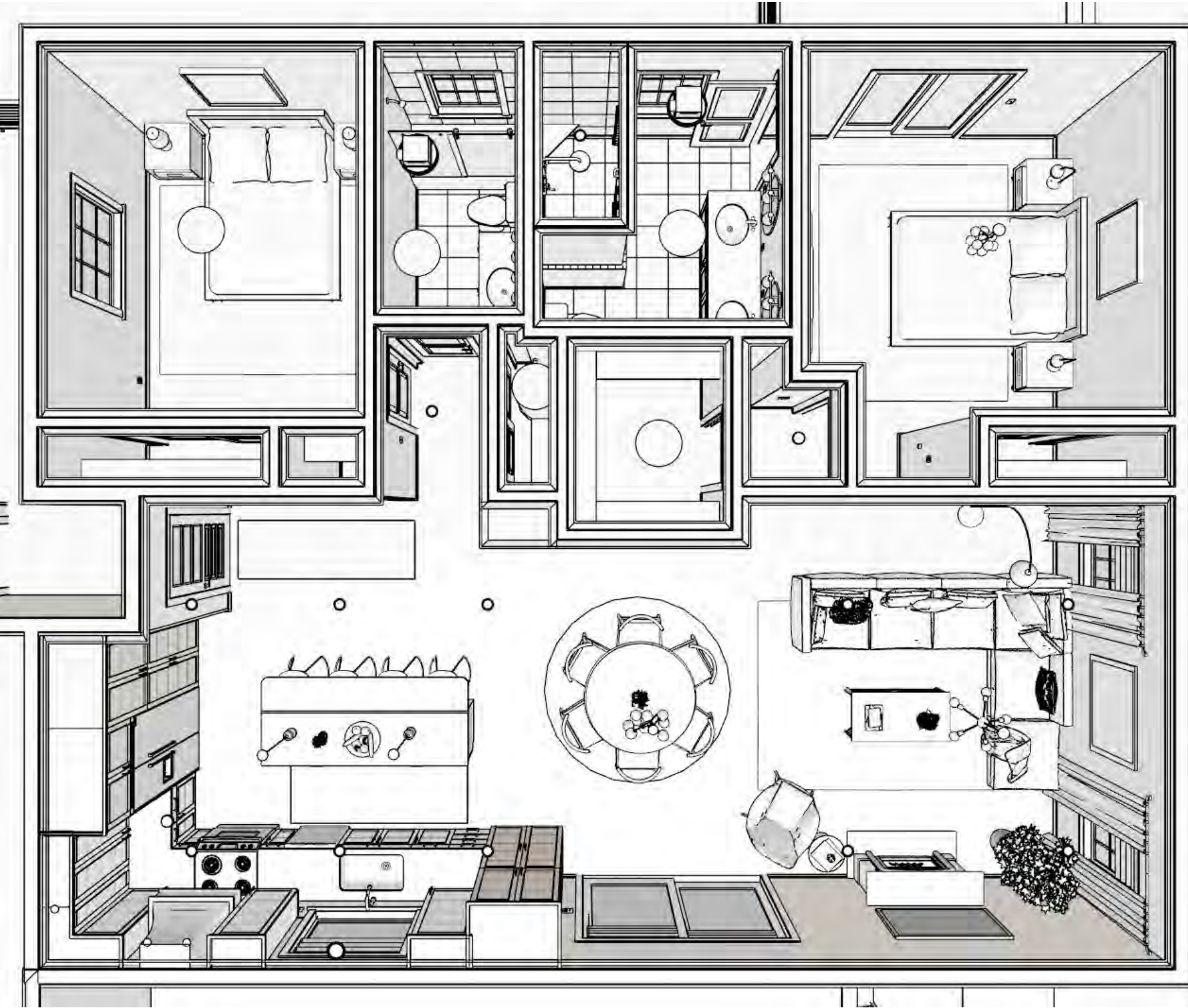


### Exterior Elevations

- Two-bedroom remodel focused on improving circulation, storage, and spatial clarity within an existing footprint.
- Strategic additions, including direct garage access, increased storage, and new openings for light and ventilation, improve both usability and livability.

# Toulouse Lane, Emerald Hills, CA

## Condo Remodel



Overall Layout Rendering



Kitchen Rendering



Dining and Living Rendering

# Olive Hill Lane, Woodside, CA

## En Suite Remodel



**Vanity Rendering**



**Bath Rendering**

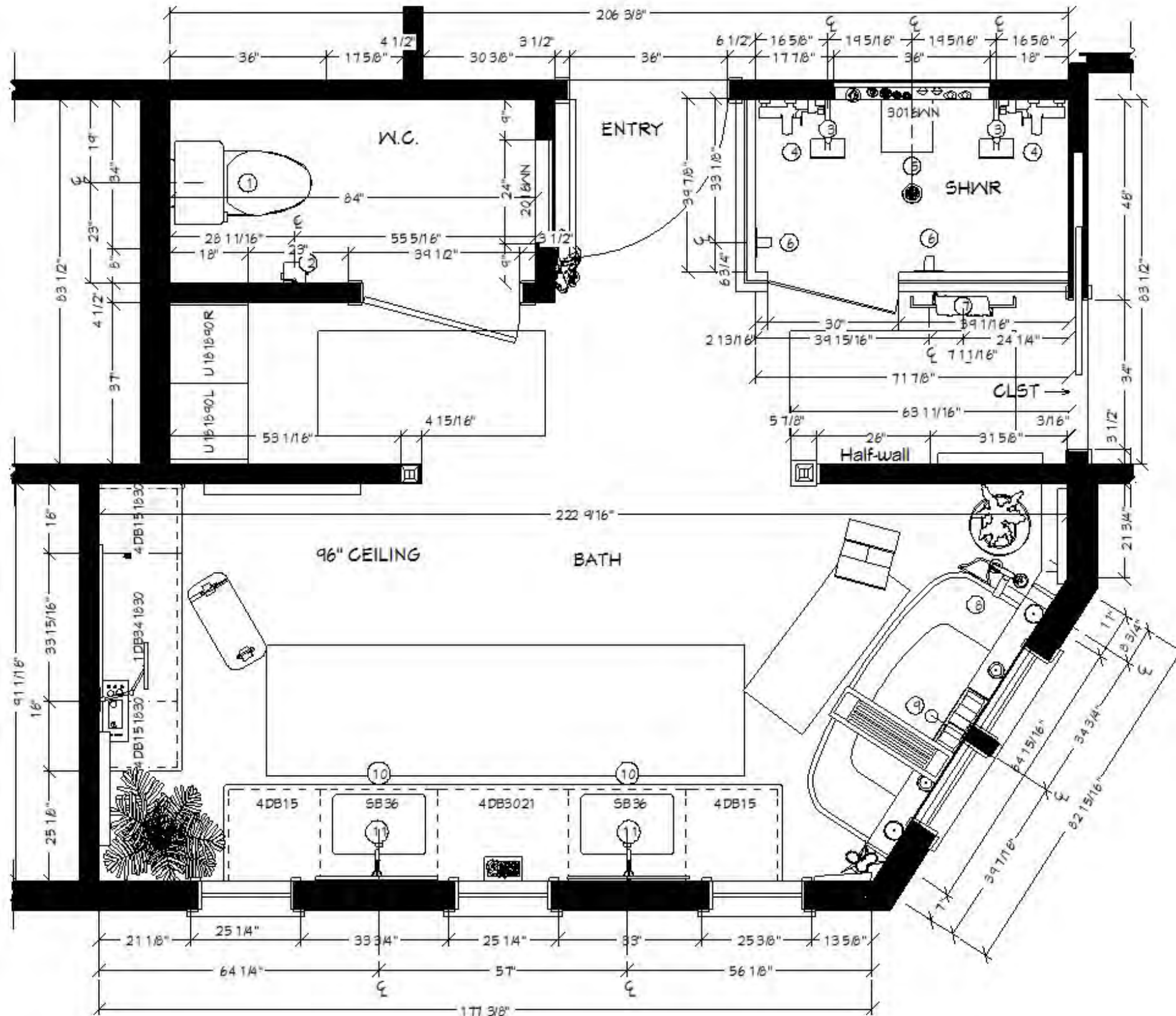


**Shower Rendering**

- Designed a multi-user primary bathroom within a constrained footprint with dual entries and structural interruptions
- Organized circulation to allow simultaneous use of shower, water closet, and vanity zones
- Integrated dual shower, soaking tub, double vanity, and dedicated makeup area without compromising flow
- Balances complex functional planning with a cohesive, light-driven material palette

# Olive Hill Lane, Woodside, CA

## En Suite Remodel Documentation



### FLOOR PLAN SPECIFICATIONS:

- 1 KOHLER REACH 1.28 GPF ONE-PIECE COMPACT ELONGATED CHAIR HEIGHT TOILET MODEL:K-78080-0
- 2 BUTTON TOILET PAPER HOLDER DELTA TEMPASSURE 17T SERIES THERMOSTATIC
- 3 SHOWER SYSTEM MODEL:D55-ARA-1TT0155
- 4 SHOWER MIXER WITH SHOWER SET
- 5 SHOWER DRAIN K-9132
- 6 HOOP HANDLE
- 7 KOHLER TOWEL WARMER
- 8 PEDESTAL TUB FAUCET
- 9 KOHLER IRVINE 59" X 29-1/2" FREESTANDING BATH MODEL:K-26079-0
- 10 KOHLER SINK K-2215
- 11 KOHLER FAUCET K-14402-4A

NOTES: SEE NOTES ON PAGE 6

Proposed Bathroom Plan







# Hillsdale Blvd, San Mateo, CA

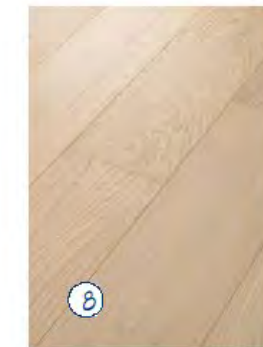
## Kitchen Renderings



Kitchen Overview Rendering



Window Wall Rendering



Mood Board