

60'S Inspired Mid-Century Kitchen

design by:
Adrian Dufour

SCOPE OF WORK

This project reimagines a compartmentalized mid-century kitchen as a more open, functional, and connected living space. The existing enclosed kitchen was opened to both the dining room and adjacent circulation areas to improve sightlines, flow, and natural interaction within the home.

The redesign maximized efficiency within the existing footprint while incorporating a large central island with seating for four, expanded storage solutions, integrated appliances, and improved workspace organization. The project balances warm mid-century influences with contemporary functionality through thoughtful material selection, clean detailing, and human-centered space planning.

- Reconfigured enclosed kitchen layout into an open-plan design
- Opened visual connection to dining room and adjacent circulation areas
- Added central island with seating for four
- Integrated appliance layout and workflow optimization
- Expanded storage and pantry functionality
- Coordinated custom cabinetry, finishes, hardware, and lighting
- Enlarged window opening to improve natural light
- Developed construction documentation, elevations, and electrical coordination drawings

SHEET INDEX

MOOD BOARD.....	2
FLOOR PLAN.....	3
CONSTRUCTION PLAN..	4
MECHANICAL PLAN.....	5
ELEVATIONS.....	6-9
PERSPECTIVES.....	10-12





1



2



1



3



4



5



6



7



8



9



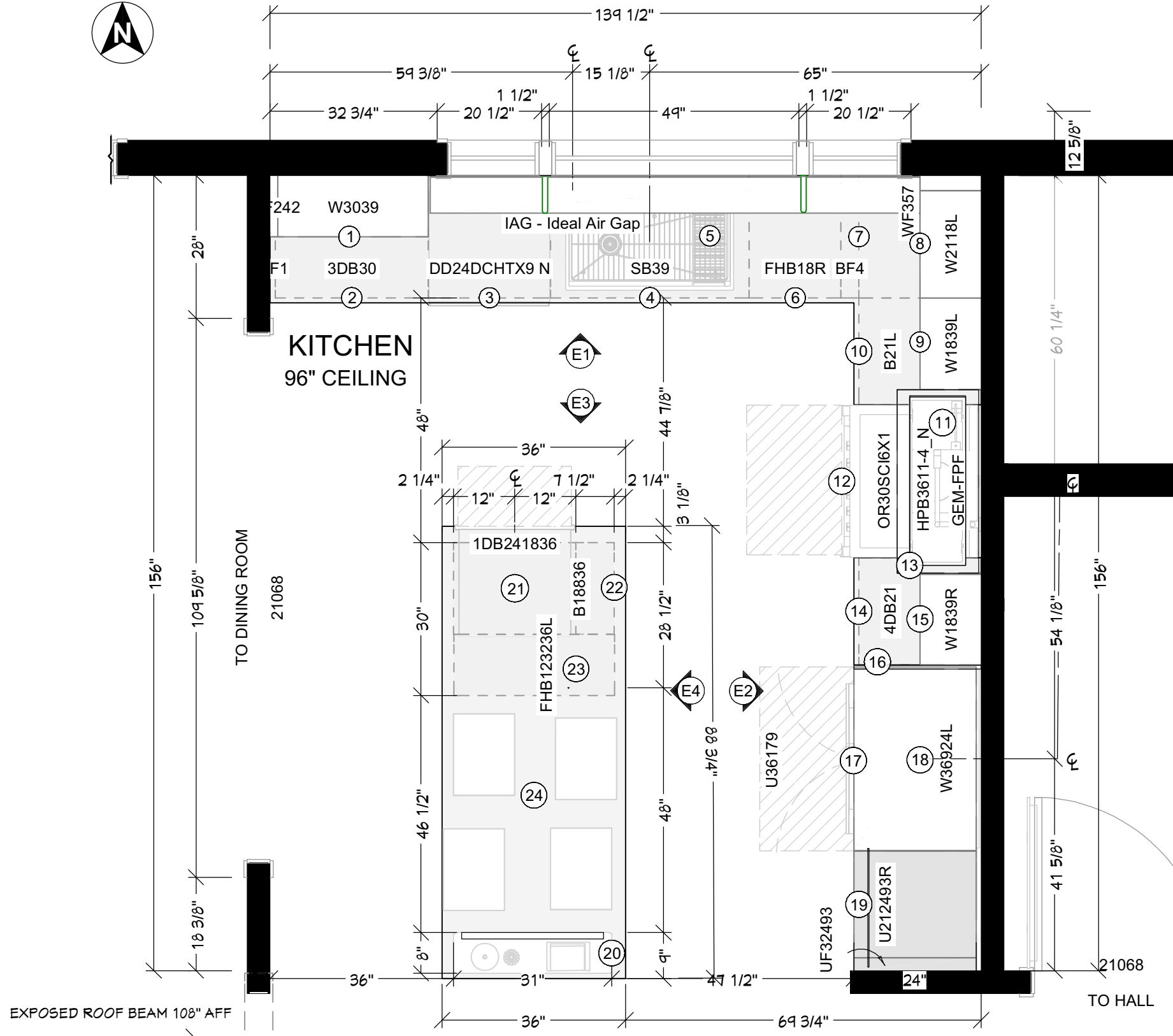
10

MOOD BOARD SPECIFICATIONS

- 1 INSPIRATION PHOTO
- 2 16" BRASS PENDANT
BRAND: MILO; MODEL: 84437LCB
- 3 QUARTZ COUNTER
BRAND: CORIAN QUARTZ; COLOR: QUIET WHITE
- 4 NAUTALIS SHELL PAINT
BRAND: BENJAMIN MOORE; HUE: 064
- 5 BLUME DECO PORCELAIN TILE
BRAND: ADESSI; SKU: 100782747
- 6 NEWPORT SOFT CLOSE SHAKER CABINET
BRAND: HOME DECORATORS; COLOR: CREAM
REGENT'S PARK HONEY BRONZE PULL
BRAND: TOP KNOBS; MODEL: 6" TK3093HB, 12" TK3097HB
- 7 8" PLANK ENGINEERED WHITE OAK
BRAND: UTMOST; ITEM: BCI4526432
- 8 GOLD PULL-DOWN FAUCET
BRAND: HANSGROHE; MODEL: 72800251
- 9 NEWPORT SOFT CLOSE SHAKER CABINET
BRAND: HOME DECORATORS; COLOR: BLUE

MATERIAL & FINISHES

CABINETRY BRAND: ARISTOKRAFT DOORSTYLE: BRELLIN
 MAIN CABINET COLOR: BENJAMIN MOORE, BONE
 ISLAND CABINET WOOD: RIFT-CUT WHITE OAK FINISH: NATURAL
 ONE QUARTZ COUNTERTOPS IN CLOUD WHITE COLOR
 BRUSHED BRASS HARDWARE



EXPOSED ROOF BEAM 108" AFF

2 1/2 SLOPED CEILING
(96" at WALL)

FLOOR PLAN
1/2" = 1'

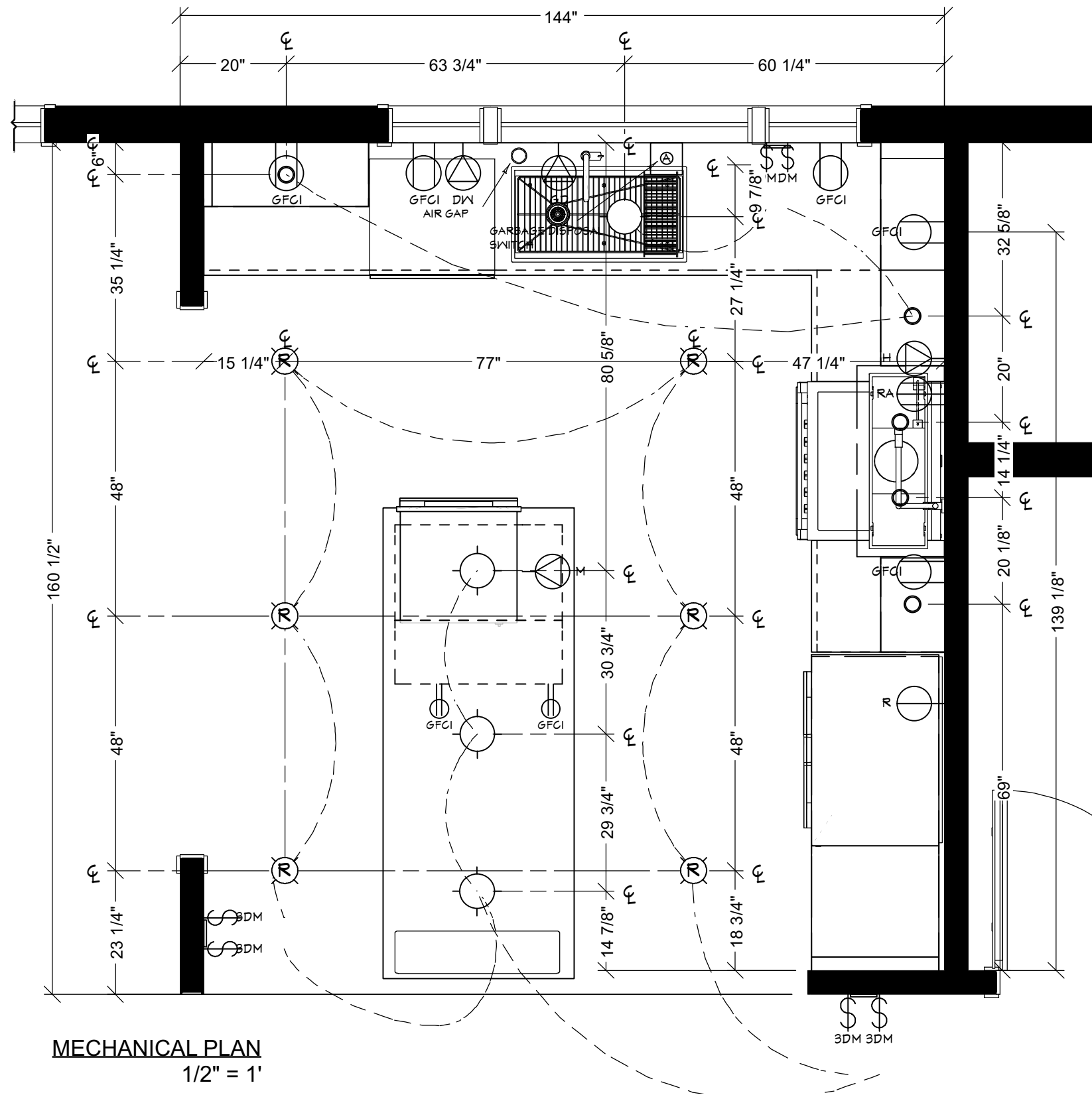
INSTALLATION NOTES

1. VERIFY ALL MEASUREMENTS ON-SITE.
- FULL-HEIGHT CABINETRY:
2. FUR THE FRIDGE AND LARGE CABINETS SO THE COUNTERTOP DYES INTO IT.
3. SHIP TOE KICK LOOSE ON LARGE PANTRY FOR INSTALL.
4. CEILING: SCRIBE 3.5" FLUSH MOLDING TO CEILING.

FLOOR PLAN SPECIFICATION




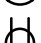


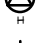




- ① 29.5" DBL DOOR WALL CABINET
- ② 30" 3DB FULL EXTENSION DWR
- ③ 24" BUILT-IN DISHDRAWER TOP CONTROL
BRAND: FISHER & PAYKEL; MODEL: DD24DCHTX9 N
- ④ 39" STANDARD SINK BASE
33" 8 DEGREE UNDERMOUNT SINK
BRAND: KOHLER; MODEL: DD24DCHTX9 N
GOLD PULL-DOWN FAUCET
BRAND: HANSGROHE; MODEL: 72800251
- ⑤ 18" ROLL-OUT WASTE RECEPTICLE
BRAND: REV-A-SHELF ; MODEL: 5349-15DM18-1
- ⑥ 3.5" OVERLAY & FILLER
- ⑦ 21" LH WALL CABINET & 21" X 18" LH APPLIANCE GARAGE
- ⑧ 18" LH WALL CABINET
- ⑨ 45" RH BLIND CABINET
MODERN RETRACTABLE WALL-MOUNT POT FILLER
FAUCET - AGED BRASS
SH349721AGBR
- ⑩ 30" INDUCTION RANGE
CUSTOM WOOD RANGE HOOD
BRAND: FISHER & PAYKEL; MODEL: OR30SC16X1
- ⑪ 1100 CFM 36" RANGE INSERT HOOD
BRAND: FISHER & PAYKEL; MODEL: HPB3619-12 N
- ⑫ 21" 4DB RANGE DRAWERS
- ⑬ 18" RH WALL CABINET
- ⑭ 96"H X 3/4"W X 25.5 D FRIDGE PANEL
- ⑮ PANEL READY 36" FRIDGE
BRAND: FISHER & PAYKEL; MODEL:RS36A72J1 N
- ⑯ 36"W X 24"D X 9"H LIFT UP WALL CABINET
- ⑰ 21" PULL-OUT PANTRY
- ⑱ CUSTOM CONSOLE CABINET
24"SPEED OVEN
BRAND: FISHER & PAYKEL; MODEL: OM24NDB1
- ⑲ APPLIANCE INSERT CABINET WITH 8" PULL-OUT DRAWER
- ⑳ 18"W X 7.5" OPEN BASE WITH 1 SHELF
- ㉑ 12" PULL-OUT BASE
- ㉒ 46.5" ISLAND SEATING FOR 4



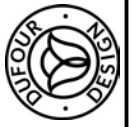


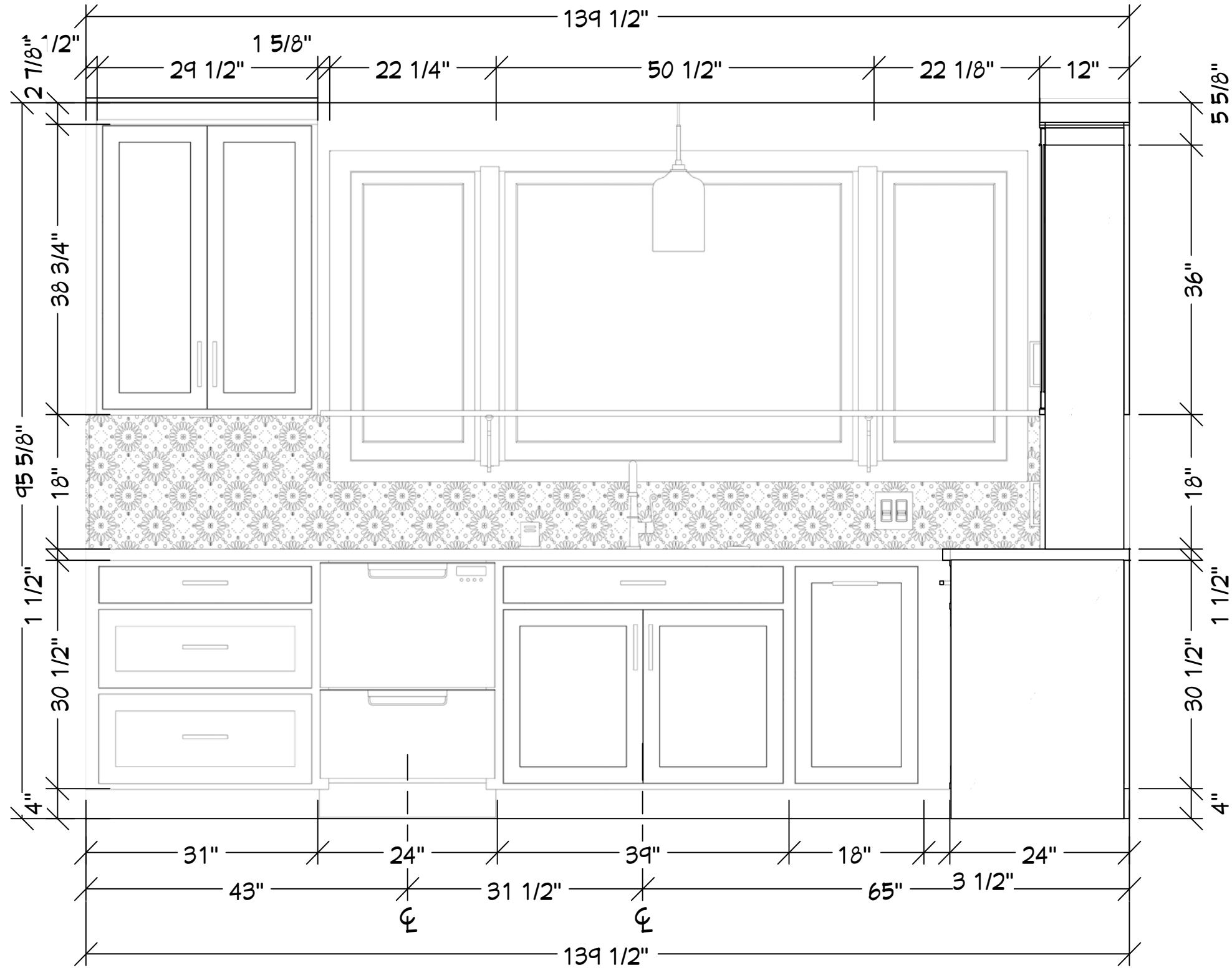
MECHANICAL PLAN
1/2" = 1'

ELECTRICAL LEGEND

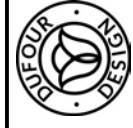
-  3-WAY SLIDING DIMMER
-  AIR SWITCH - COUNTERTOP
-  BELLA PENDANT
-  DISHWASHER, HW
-  DUPLEX
-  GFCI
-  GFCI FLOATING
-  GARBAGE DISPOSAL
-  ELECTRIC RANGE
-  HOOD W/ VENT
-  MERIDIAN PENDANT
-  MICROWAVE, HW
-  PUCK
-  RECESSED DOWN LIGHT 4
-  REFRIGERATOR
-  SINGLE POLE SLIDING DIMMER
-  GAS LINE

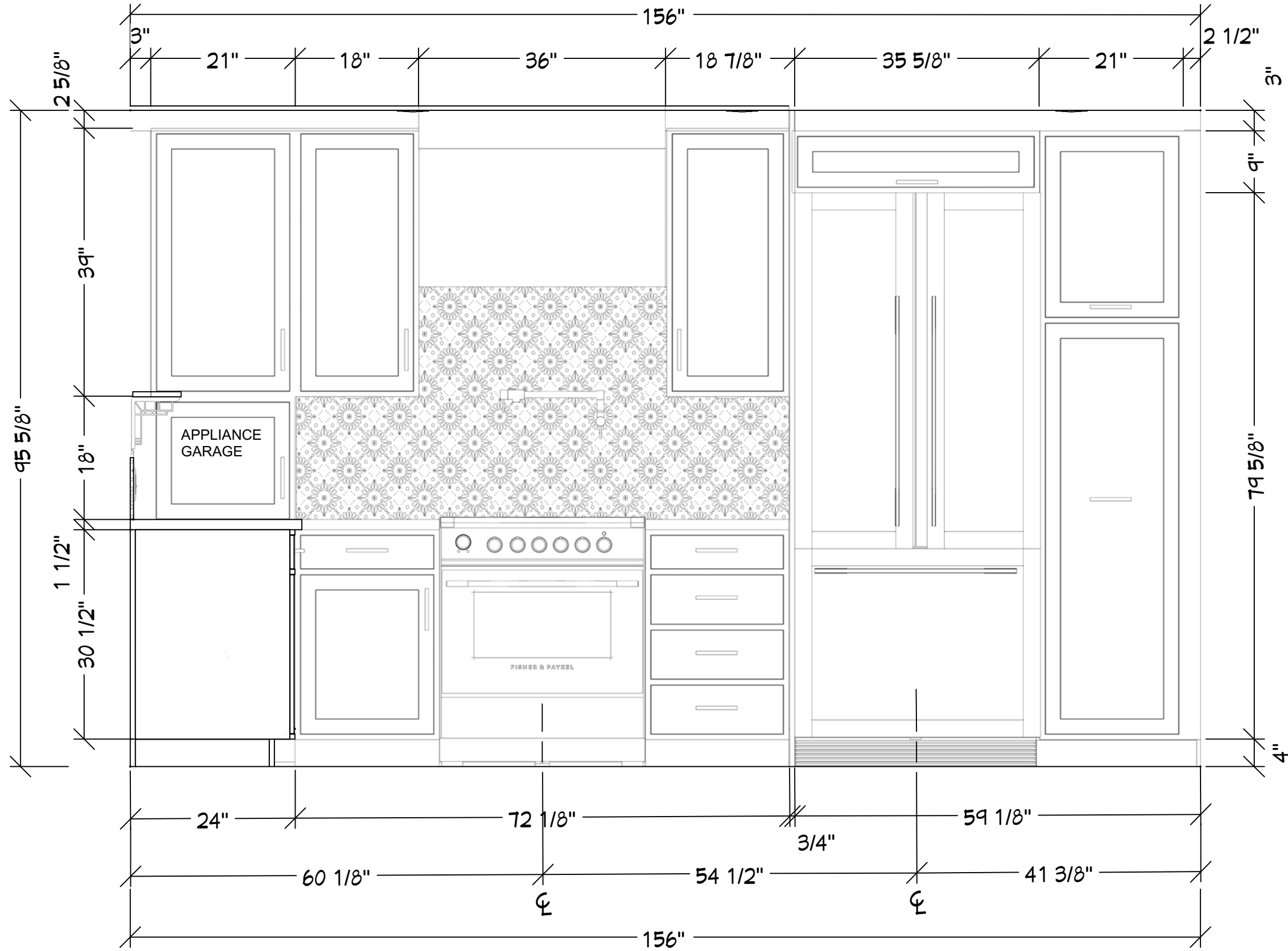
*ALL SWITCHES 48" ALL RECEPTACLES 42" ABOVE FINISHED FLOOR (A.F.F.) UNLESS NOTED





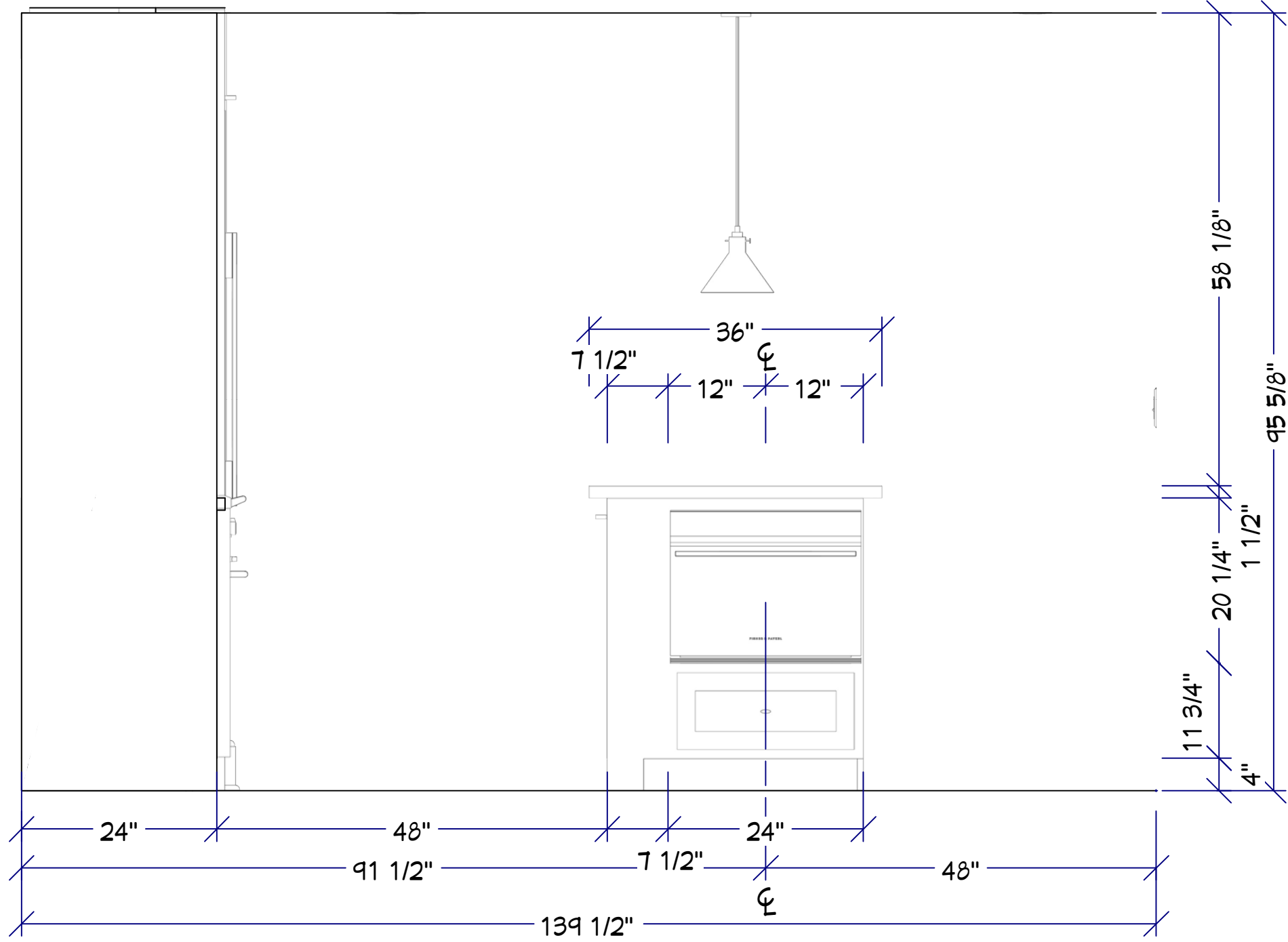
E1 SINK ELEVATION
1/2" = 1'



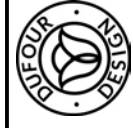


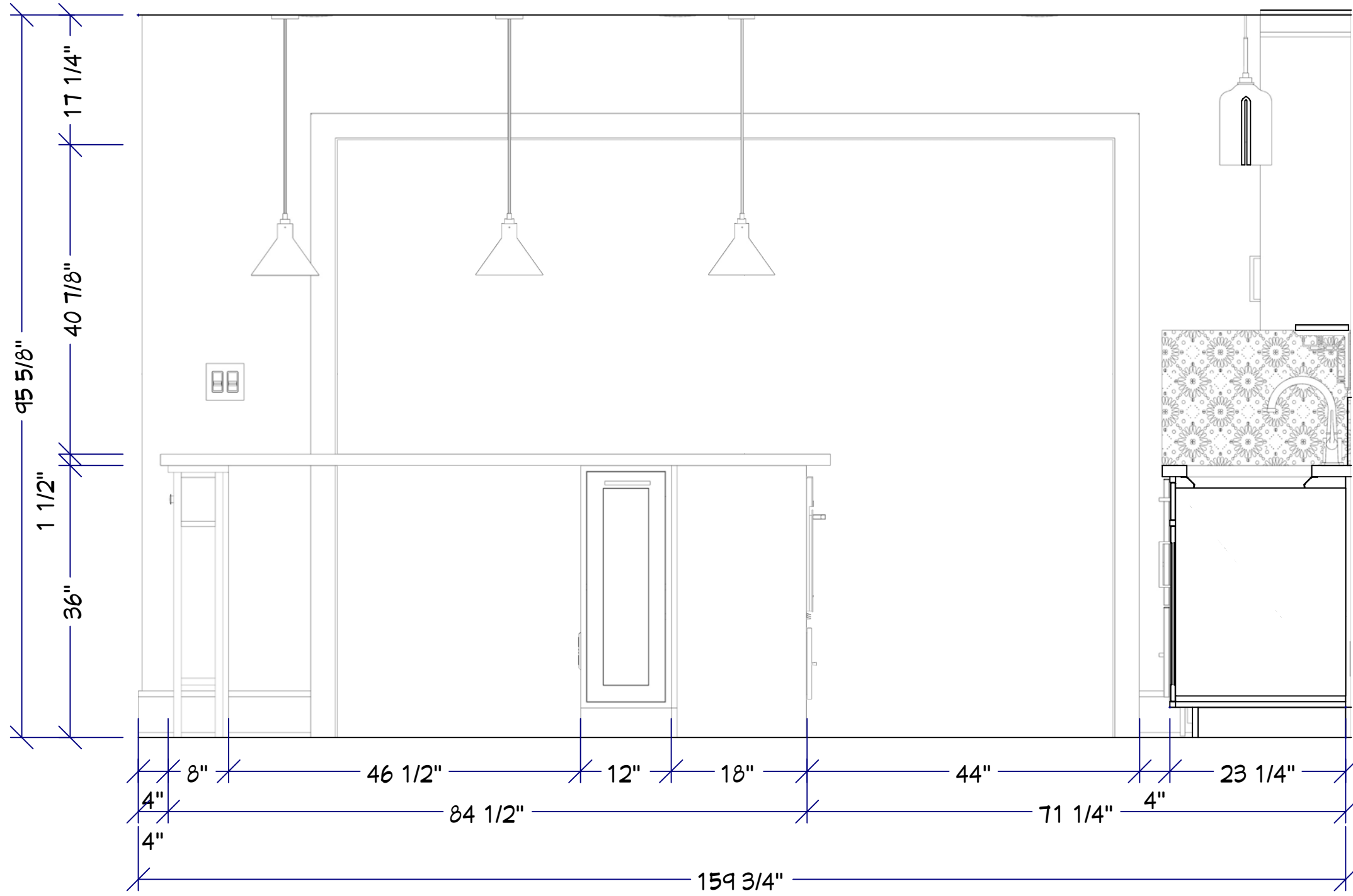
E2 RANGE ELEVATION
3/4" = 1'





E3 MICROWAVE RENDERING
3/4" = 1'





E4 ISLAND RENDERING
3/4" = 1'



GENERAL CONSTRUCTION NOTES

- 1 Verify all field dimensions and site conditions prior to fabrication or installation.
- 2 Contractor shall report discrepancies between drawings and field conditions before proceeding with work.
- 3 All dimensions are from finished surfaces unless otherwise noted.
- 4 Coordinate all architectural, electrical, plumbing, appliance, and millwork requirements prior to construction.
- 5 Contractor to verify structural requirements prior to modifying existing walls, openings, or framing conditions.
- 6 Protect all finished surfaces, fixtures, cabinetry, and flooring during construction and installation.
- 7 All work shall comply with applicable local building, electrical, and plumbing codes.
- 8 Install all materials according to manufacturer specifications and recommendations.

GENERAL ELECTRICAL NOTES

- 1 Coordinate all outlet, switch, appliance, and lighting locations with cabinetry and finish plans prior to rough-in.
- 2 Verify all appliance electrical requirements prior to installation.
- 3 Under-cabinet lighting locations to be coordinated with millwork and backsplash conditions.
- 4 Decorative lighting fixtures to be centered and aligned with island and surrounding architectural elements unless otherwise noted.
- 5 All electrical work shall comply with applicable local electrical codes.
- 6 Contractor to verify final fixture specifications and mounting requirements prior to installation.

General Tile Notes

- 1 Verify tile layout and pattern orientation prior to installation.
- 2 Tile installer to coordinate all cuts, transitions, and edge conditions for clean alignment and consistent joint spacing.
- 3 Provide movement joints and expansion spacing where required by manufacturer specifications.
- 4 All tile surfaces to be installed level, flush, and free of lippage.
- 5 Verify all finish transitions with adjacent flooring, cabinetry, and countertop materials prior to installation.
- 6 Grout color to be selected and approved prior to final installation.

General Cabinetry Notes

- 1 Verify all field dimensions prior to fabrication or installation of cabinetry and countertops.
- 2 Contractor to confirm appliance specifications and rough-in dimensions prior to final cabinet ordering.
- 3 Cabinet installers to scribe fillers, panels, and finished ends to adjacent walls, ceilings, and uneven field conditions as required.
- 4 Maintain consistent reveals and alignment between cabinet faces, panels, and adjacent finish surfaces.
- 5 Provide required filler panels to accommodate appliance clearances, drawer operation, and door swing.
- 6 Coordinate all electrical outlets, switches, lighting, and appliance connections with cabinetry layout prior to installation.
- 7 Countertop fabricator to field verify all dimensions prior to fabrication.
- 8 Toe kicks to remain continuous and aligned throughout unless otherwise noted.
- 9 Cabinet hardware placement to remain consistent throughout the project.
- 10 Protect all finished cabinetry and countertop surfaces during installation and construction.
- 11 Fur out full-height cabinetry wall an additional 1½" beyond standard cabinet depth to create a 25½" deep condition and allow countertop to terminate cleanly into tall cabinetry.